

TWB®



沈阳瑞思达轴承有限公司
SHENYANG TOTAL BEARING CO.,LTD.
Tel: 024 22945833 22923833 24853899
Fax: 024 88729249
Mobile: 13940483518 15640413155 (微信)
Web: <https://www.rstbearing.com.cn>



江苏帝达贝轴承有限公司

地址: 江苏省无锡锡山经济开发区蓉洋一路8号
邮政编码: 214192
电话: 86-510-8562 0688
传真: 86-510-8562 6208, 8562 6308
邮箱: twbinfo@twb.com.cn
网址: www.TWB.com.cn

Jiangsu TWB Bearings Co., Ltd.

Address: No.8 Rongyang Yi Road, Xishan Economic
Development Zone, Wuxi, Jiangsu
Post Code: 214192
Telephone: 86-510-8562 0688
Fax: 86-510-8562 6208, 8562 6308
E-mail: twbinfo@twb.com.cn
Website: www.TWB.com.cn

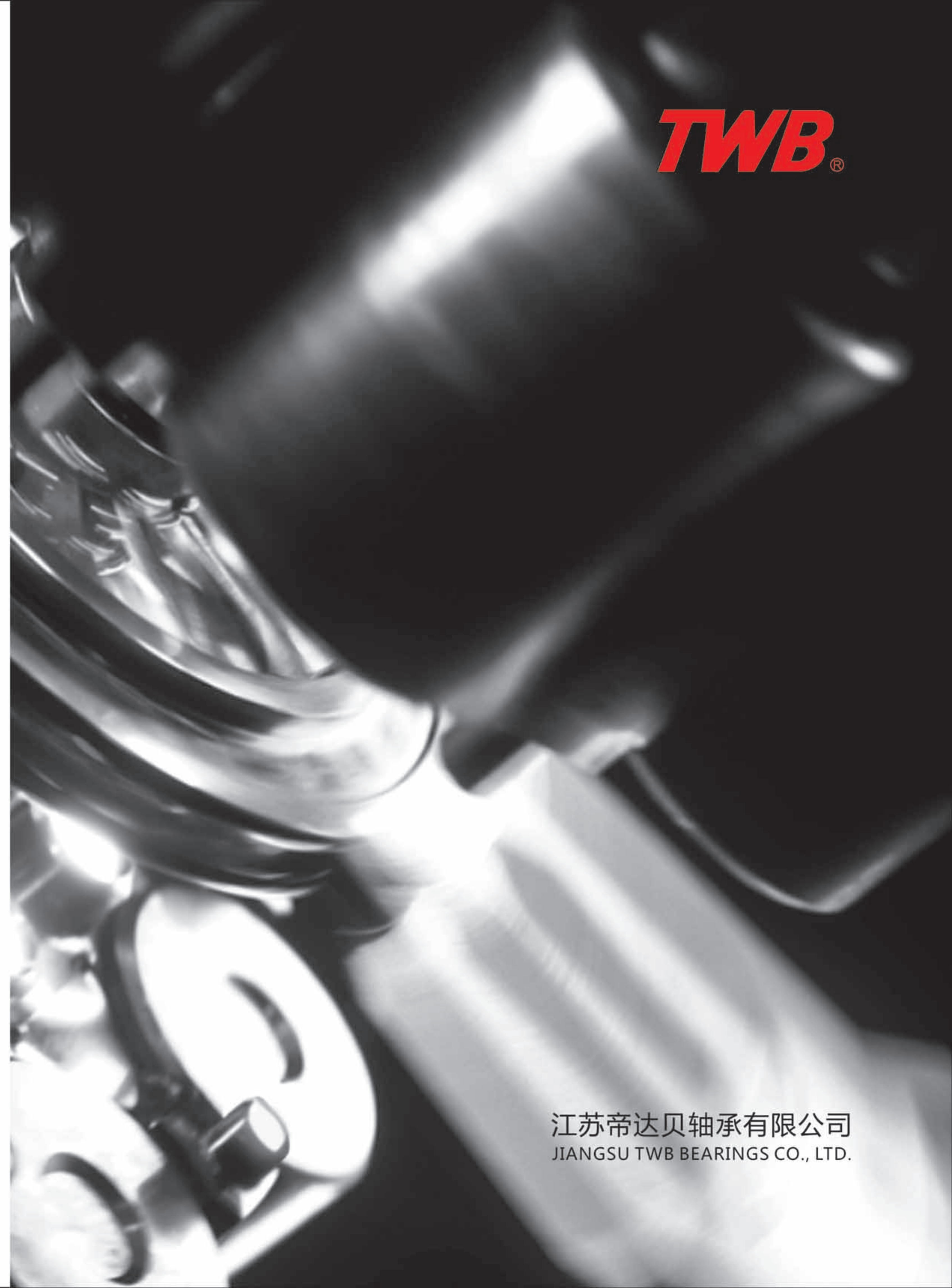


关注TWB官方微信

帝达贝® TWB®是江苏帝达贝轴承有限公司之注册商标
Jiangsu TWB Bearings Co., Ltd. is the trademark owner of 帝达贝® and TWB®

© 2020江苏帝达贝轴承有限公司·中国印制
11-20-2020 编号: 1014E

本资料版权归本公司所有, 不得翻印。违者必究。如有更改, 恕不另行通知。



江苏帝达贝轴承有限公司
JIANGSU TWB BEARINGS CO., LTD.

TWB
TWB Power Inside
动力之内帝达贝

关于帝达贝 About TWB

江苏帝达贝轴承有限公司，专业制造TWB®品牌的高品质轴承及相关产品。公司致力于成为中国轴承企业的标杆，以先进适用的技术、稳定可靠的产品和专业周到的服务为用户提供更优性价比的解决方案。

Jiangsu TWB Bearings Co., Ltd. is specialized in manufacturing various high-quality bearings and related products. Committed to becoming the benchmark of Chinese bearing companies, TWB provides optimal solutions with advanced & applicable technology, consistent & reliable bearings, and professional & comprehensive services to customers.



沈阳瑞思达轴承有限公司
SHENYANG TOTAL BEARING CO., LTD.
Tel: 024 22945833 22923833 24853899
Fax: 024 88729249
Mobile: 13940483518 15640413155 (微信)
Web: <https://www.rstbearing.com.cn>

沈阳瑞思达轴承有限公司
SHENYANG TOTAL BEARING CO.,LTD.
Tel: 024 22945833 22923833 24853899
Fax: 024 88729249
Mobile: 13940483518 15640413155 (微信)
Web: <https://www.rstbearing.com.cn>

品牌承诺 Brand Commitment

- 稳定可靠 Stable and Reliable
- 性能优异 Excellent Performance
- 服务卓越 Superior Service

我们始终致力于以可靠与高性价比的产品助客户提升竞争力。

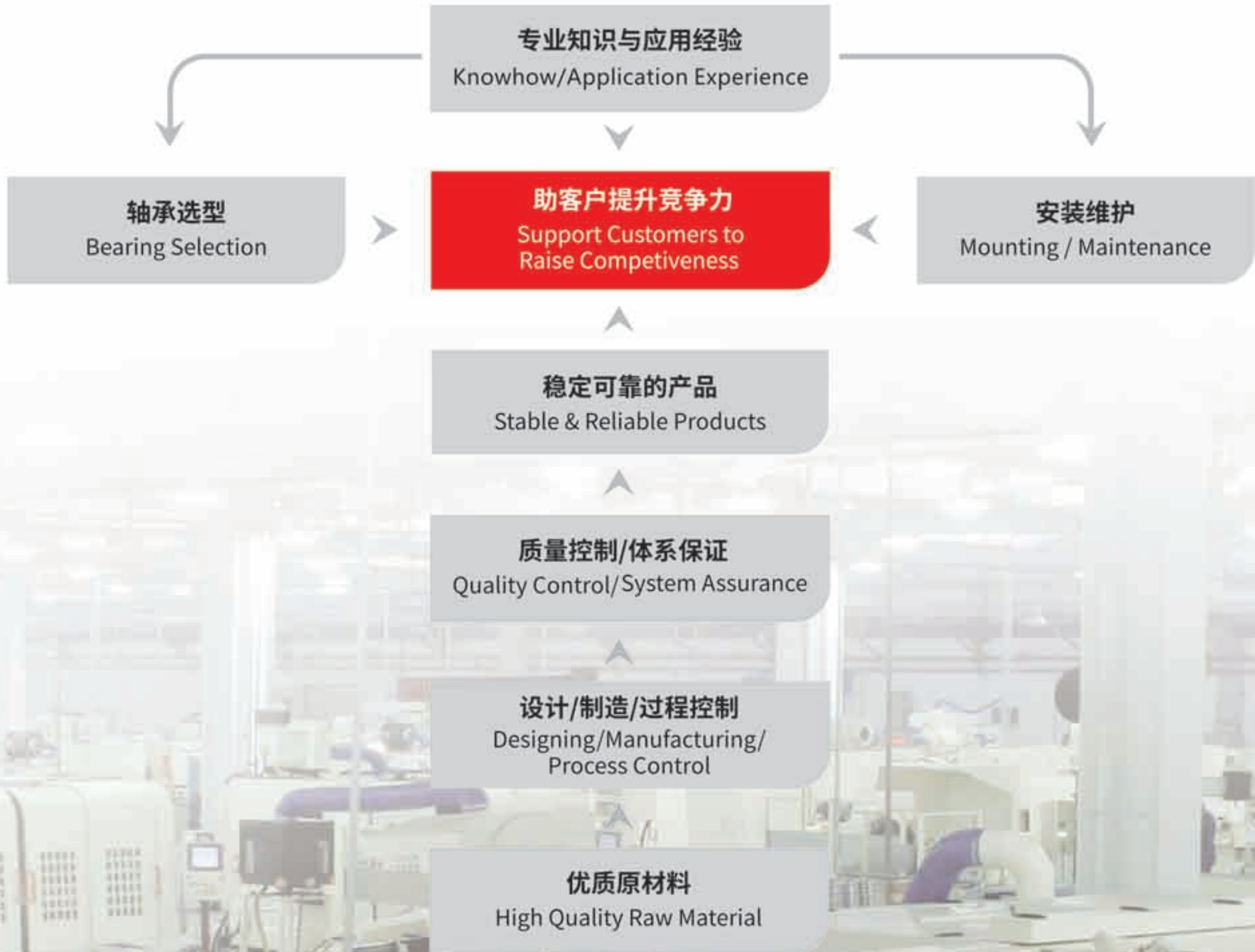
公司已取得ISO9001质量管理体系认证、ISO14001环境管理体系认证及ISO45001职业健康安全管理体系认证。公司坚持选用优质原材料，严格执行过程控制与质量监控标准，确保产品性能与品质高度一致性，为客户提供可靠的产品。同时，公司通过优化产品结构 with 改进工艺流程，不断提升产品性能，满足客户更高标准的要求；并且还可以通过共同开发满足客户国产化、定制化需求。

We are always committed to support customers to raise competitiveness with reliable and cost-effective products.

The company has obtained ISO9001 Quality Management System certification, ISO14001 Environmental Management System certification, and ISO45001 Occupational Health and Safety Management System certification. The company provides reliable products by selecting premium raw material, conducting strictly process and quality control standards, which ensure high consistency of performance and quality. Meanwhile, the company improves product performance continuously to meet higher standard requirement from customers, by optimizing product structure and improving manufacturing process, and the company could work with customers in joint effort for localization and customization requirement.



为客户创造价值
Creat Values for Customers

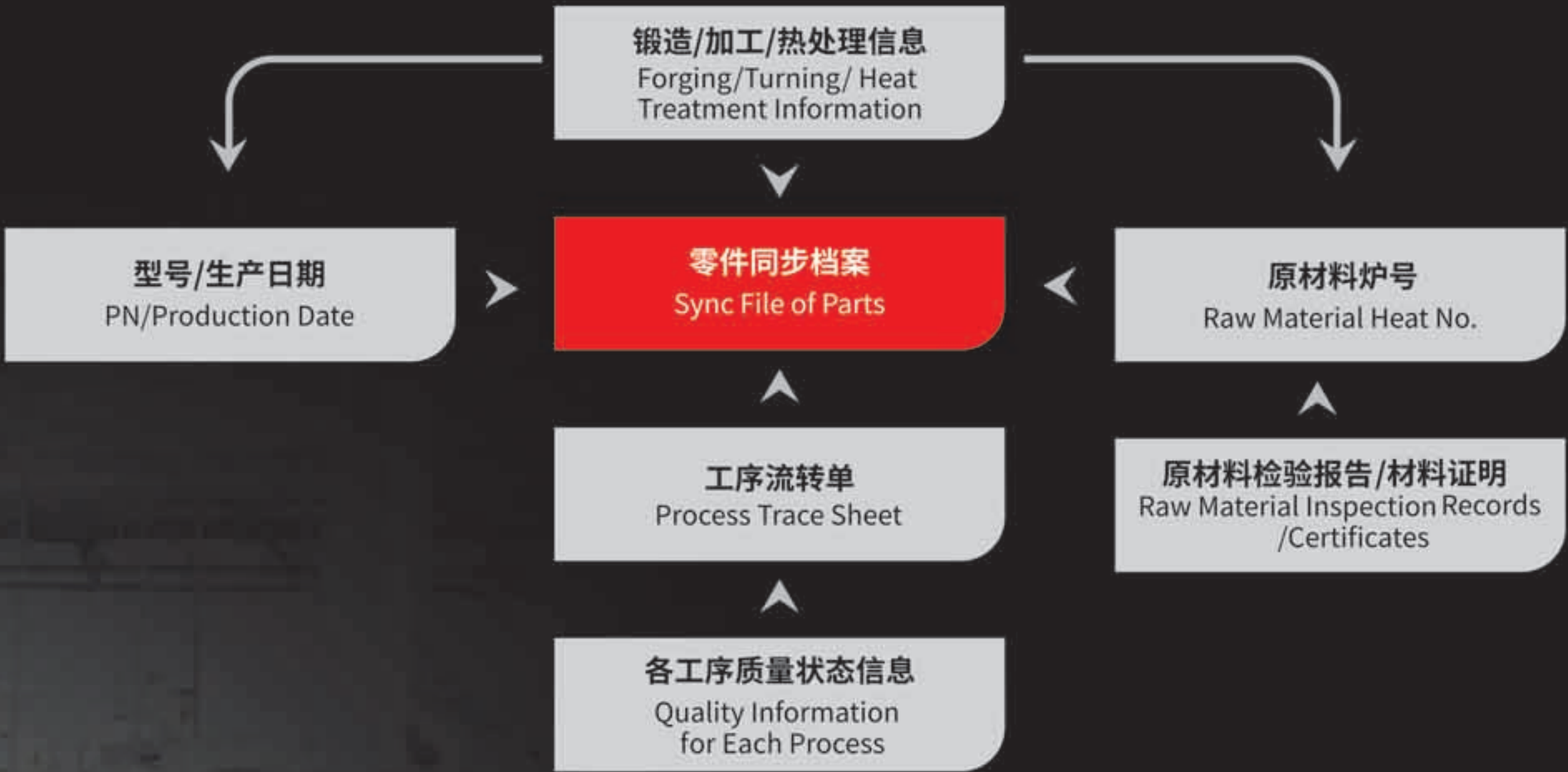


TWB®

生产流程 Production Processes

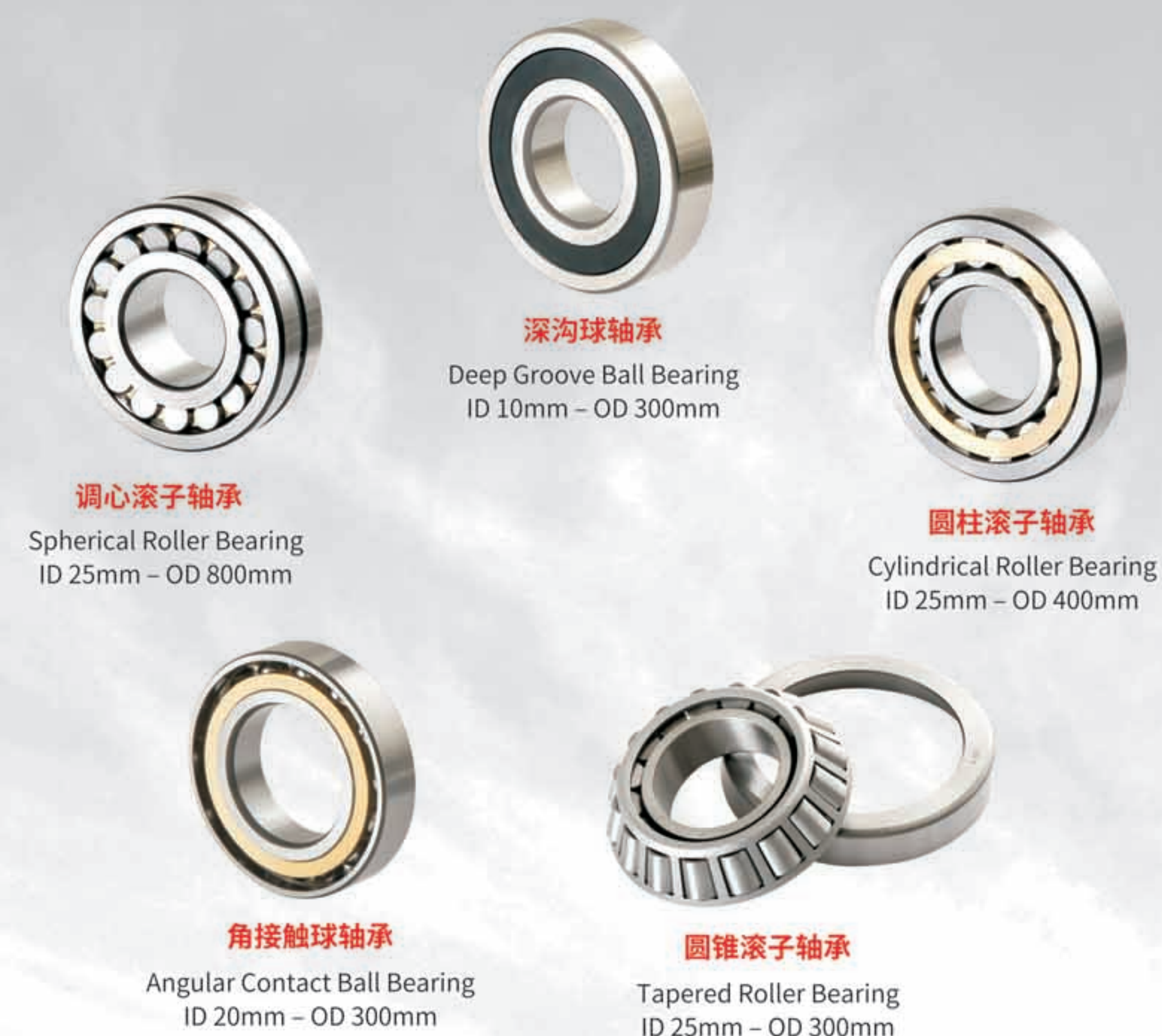


同步档案 - 全程追溯 Sync Files-Full Traceability



我们的优势 Our Advantages

- 60年以上轴承设计、制造及应用经验
 - 集国外先进管理理念和国内资源优势于一体的美国独资企业
 - 在20多个行业赢得客户广泛信赖
 - 业务覆盖全国29省和直辖市，及全球14个国家和地区
 - 全系列产品组合，可提供定制化服务，为客户创造价值
- Over 60 years in bearing industry, good experiences in bearing designing, manufacturing and application.
 - An American wholly owned enterprise, with the integration advantages from both advanced foreign management concept and domestic resources.
 - Well reputation in more than 20 industries.
 - Business covers 29 provinces and municipalities in China, 14 countries and regions in the world.
 - Full range products offering, also provides customized services to create value for customers.



帝达贝主导产品包括调心滚子轴承、圆柱滚子轴承、圆锥滚子轴承、深沟球轴承、角接触球轴承以及相关零部件等，在冶金、矿山、造纸、电梯、水泥、港口起重、工程机械、洗涤机械等行业赢得了客户的广泛信赖。

TWB leading products include spherical roller bearings, cylindrical roller bearings, tapered roller bearings, deep groove ball bearings, angular contact ball bearings, and related parts and accessories. That have been well recognized in wide range industries, include primary metals, mining, paper, elevator, cement, crane, construction, laundry machinery, etc.

与美国托林顿合资
创立TWB品牌
Joint venture with Torrington
and TWB brand established

1996

成为铁姆肯公司
下属独资企业
Become a wholly owned
enterprise by Timken

2004

新工厂投入运营
New facilities up and
running

2009

2003

铁姆肯公司并购托林顿
Torrington M&A by Timken

2008

注册成立帝达贝公司
TWB legal entity incorporated

广泛的应用领域 Applications

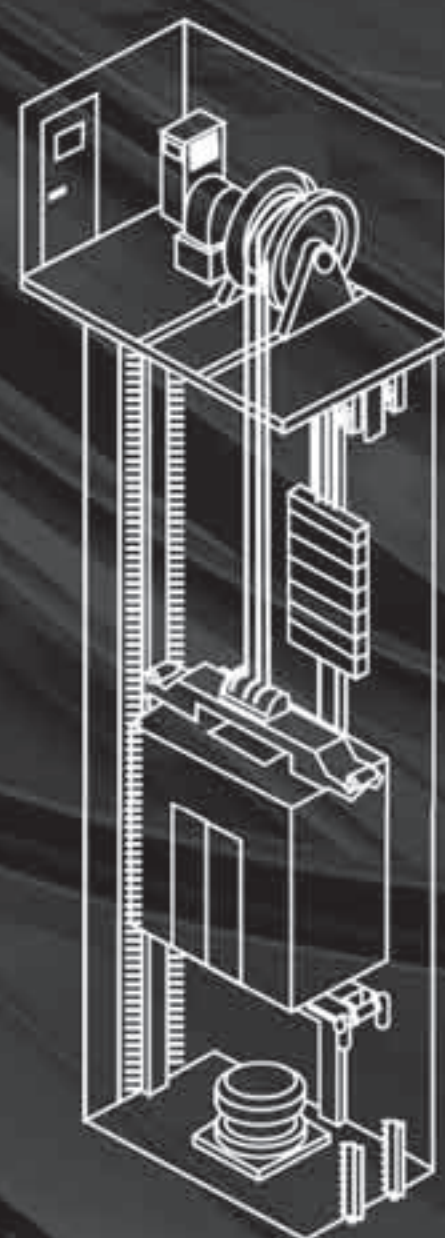
电梯和扶梯	Elevator & Escalator
工程机械	Construction Machinery
起重机械	Hoist & Crane
混凝土搅拌车	Concrete Mixing Truck
冶金行业	Primary Metal
齿轮箱	Gearbox
采矿业	Mining
煤矿机械	Coal Mine Machinery
冷镦机	Cold Heading Machinery
高速冲床	High Speed Presses
洗涤机械	Laundry Machinery
纺织机械	Textile Machinery
风机	Blower & Fan
造纸机械	Paper Machinery
水泥行业	Cement Industry
压缩机	Compressor
橡塑机械	Rubber & Plastic
环保设备	Environmental Protection Equipment



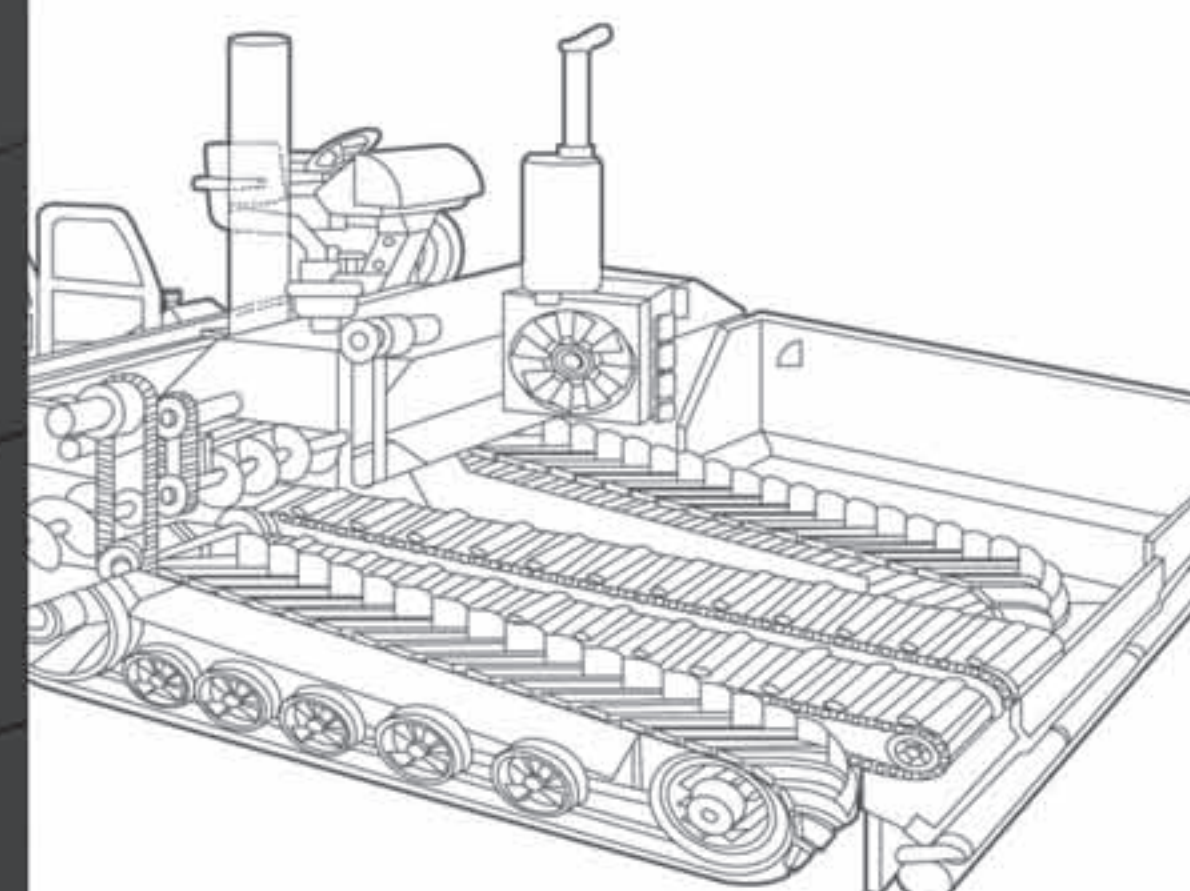
电梯和扶梯应用 Elevator & Escalator Applications

电梯行业对轴承性能有较高要求，主要体现在高速、平稳、静音表现。中国是全球电梯行业最大的制造国和消费市场，全球大部分的知名电梯企业在中国都设有工厂，作为电梯行业首批实现进口替代的轴承供应商，为大部分龙头企业连续配套十多年，占据行业领先份额。帝达贝主持起草的《电梯曳引机专用轴承振动技术标准》已成为国内轴承企业进入电梯行业的标杆。我们全系列的产品广泛应用于电梯曳引机主机、绳轮、门机、链轮、扶梯驱动等部位，有效保证了电梯运行的安全性、可靠性、高效性、舒适性。

The elevator industry has higher requirements for bearing performance, which is mainly focus on high-speed, smooth and noise performance. China is the largest manufacturing country and consumer market in the world's elevator industry, and most of the world's famous elevator companies have factories in China. As one of the first bearing suppliers to realize import substitution in the elevator industry, TWB already has been supporting most of the leading enterprises in these industries for more than ten years, and has always occupied the leading share in this market. "The technical Standard for Vibration of Special Bearings for Elevator Traction machine" drafted by TWB has become the benchmark for domestic bearing enterprises to enter the elevator industry. Our full range of products are widely used in all parts of elevator traction machine, including main engine, rope wheel, door driving, chain wheel, escalator driving etc., effectively ensuring the safety, reliability, efficiency and comfort of elevator operation.



沈阳瑞思达轴承有限公司
SHENYANG TOTAL BEARING CO.,LTD.
Tel: 024 22945833 22923833 24853899
Fax: 024 88729249
Mobile: 13940483518 15640413155 (微信)
Web: <https://www.rstbearing.com.cn>

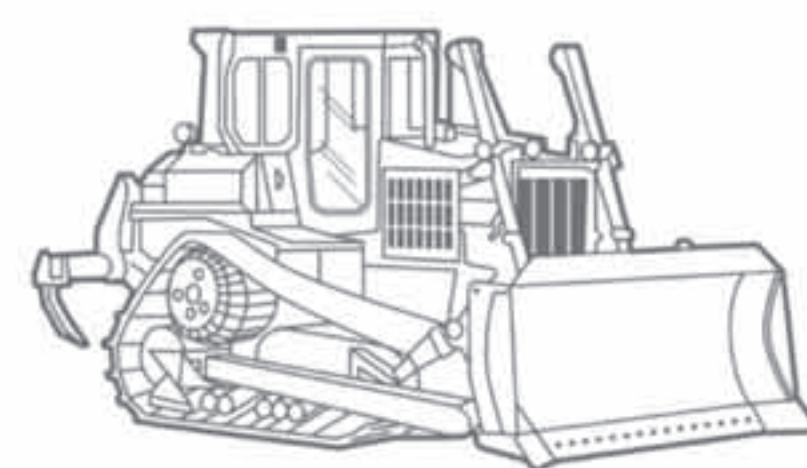


工程机械应用 Construction Machinery Applications

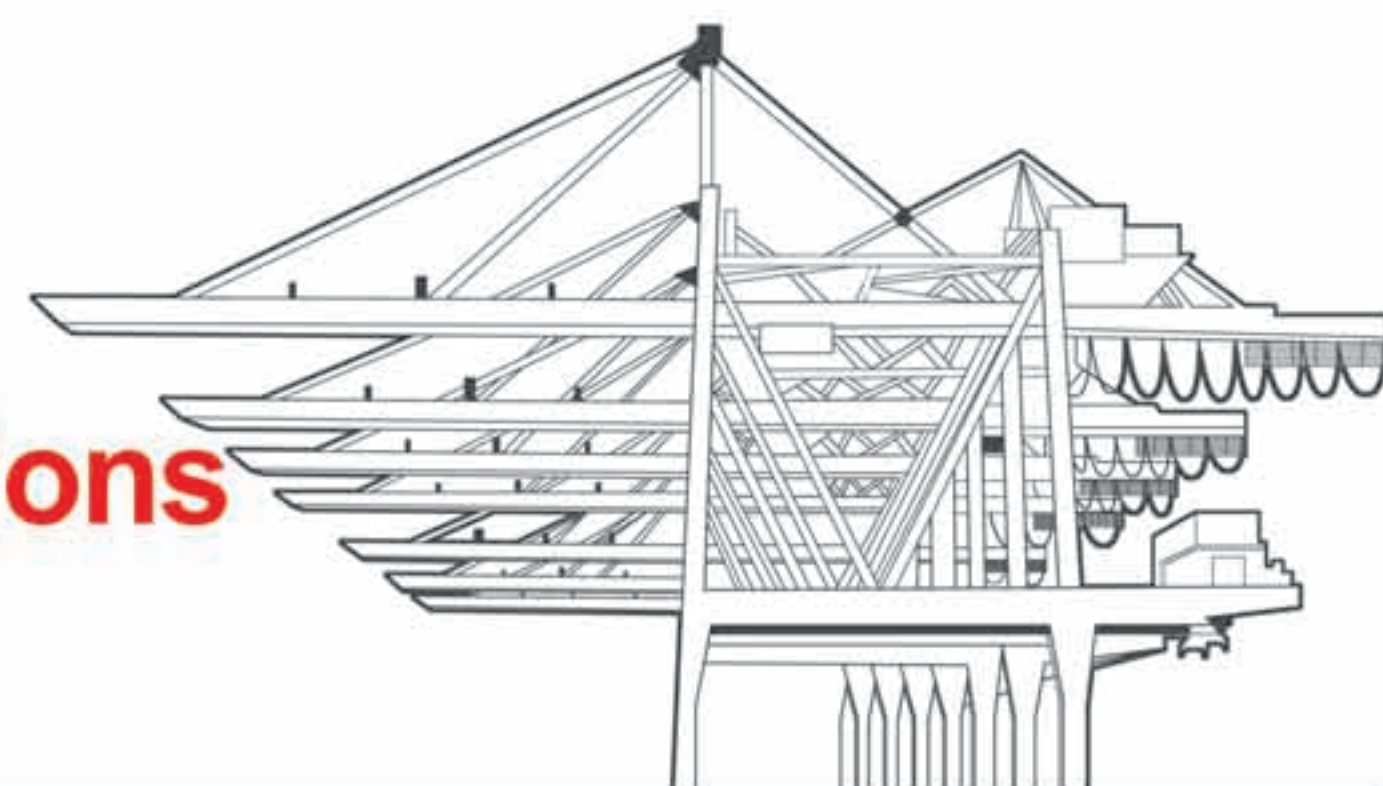


工程机械主要应用于交通运输建设和工业民用建筑等，设备种类包括挖掘、起重、压实、桩工、路面施工、混凝土机械等。针对不同设备的应用特点，帝达贝开发了各系列的专用产品，载荷能力更强且组装调整时间更少，保证了客户设备在恶劣的环境下能够安全、可靠地连续工作。例如专用于振动压路机的帝达贝MEQ系列产品，能有效应对因激振力大、振动频率高、连续作业而导致的轴承发热、烧伤问题，因可靠性、长寿命赢得客户认可，几十年始终是多家知名工程机械企业的优先选择。

Construction machinery is mainly used in transportation, construction, industrial and civil construction etc. The types of equipment include excavator, crane, road roller, piling machinery, pavement construction machinery, concrete machinery etc. According to the application characteristics of different equipment, TWB has developed a series of special products, with stronger load capacity and less time for assembly and adjustment, to ensure that customers' equipment can continuously work with safety and reliability under harsh environment. For example, TWB MEQ series products, specially designed for vibrating road roller, can effectively deal with bearing heating and burning problems caused by high vibrating force, high vibrating frequency and continuous operation. It has been recognized by customers for its reliability and long life, and has been the preferred brand of many well-known construction machinery enterprises for decades.

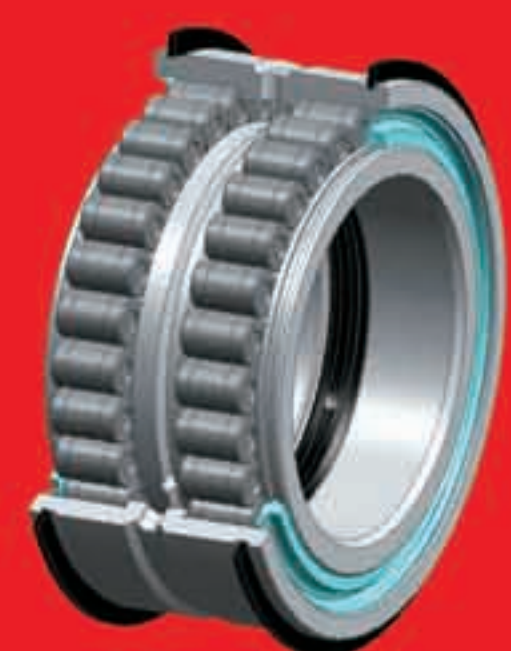


起重机械应用 Hoist & Crane Applications



起重运输机械常处于间歇性运动，反复处于启动、制动、正反向运转的工作状态；运行速度虽然不高，但经常承受重载；大部分长期在粉尘或海水腐蚀等恶劣环境下连续工作。帝达贝全系列产品在国内外客户端有几十年的成功配套经验，应用于齿轮箱、行走机构、提升机构、变幅机构、回转机构等场合，具有高承载、易维护、长寿命等特点，保证客户设备高效、连续、可靠运行。

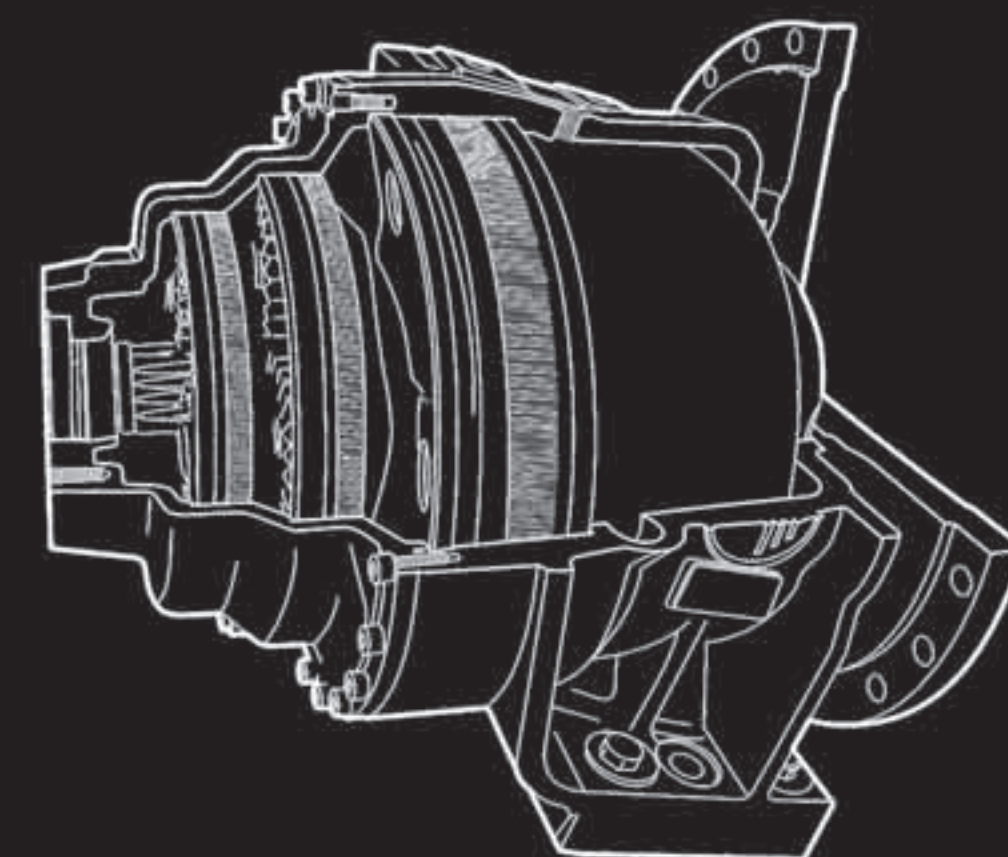
Hoist machinery is often in intermittent motion, working state is repeatedly in the starting, braking, forward and backward running; Although the speed is not high, but often bear heavy load; Most of them long time work continuously under harsh environment such as dust or seawater corrosion. The whole series of TWB products have decades of successful supporting experience in domestic and foreign customers. They are used in gearbox, running mechanism, lifting mechanism, luffing mechanism and swing mechanism etc. They have the characteristics of high bearing capacity, easy maintenance, long life etc, to ensure the efficient, continuous and reliable operation of client equipment.



混凝土搅拌车应用 Concrete Mixing Truck Applications

混凝土搅拌车专用减速机不同于传统减速机，其结构设计和工艺加工都十分特殊，要求轴承不仅适应低速重载、偏载、冲击载荷的恶劣工况；还要在法兰盘联接传递大摆角变差时，仍保持平稳、可靠、低噪音运行。帝达贝混凝土搅拌车专用轴承很好地满足这些要求，是客户定制化、国产化、优化成本的理想选择。

The concrete mixing truck uses a special reducer, which is different from the traditional reducer. Its structural design and manufacturing process are very special, so Bearing is required to adapt to the bad working conditions of low speed, heavy load, partial load and impact load. Especially even when the flange connection transfer large swing Angle variation still need keep stable, reliable, low noise operation. The TWB special bearings for concrete mixing truck can meet these requirements very well and are the ideal choice for customization, localization and cost optimization.



轴承最大摆角在3°以上。

The maximum misalignment of bearing is more than $\pm 3^\circ$.

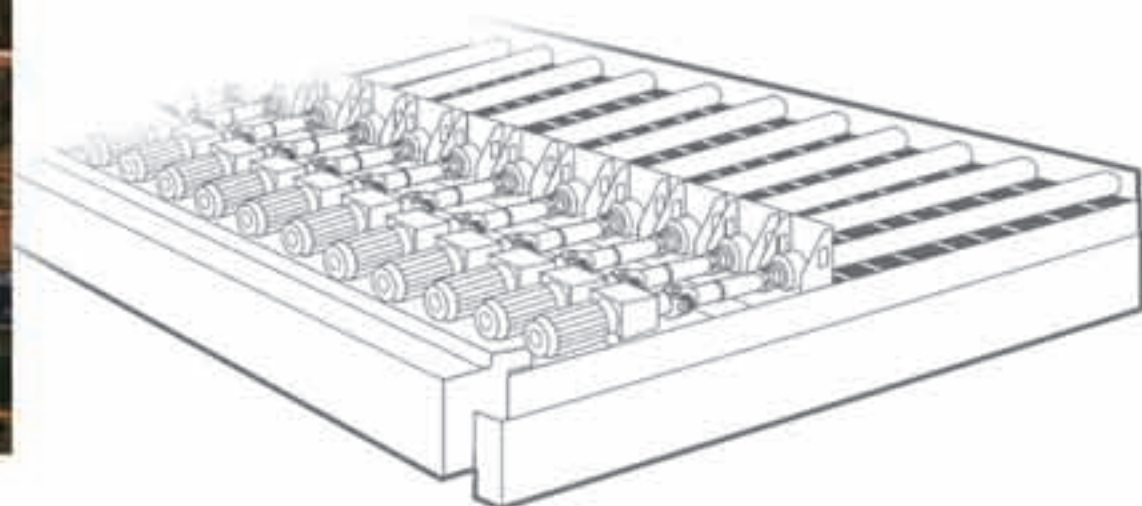
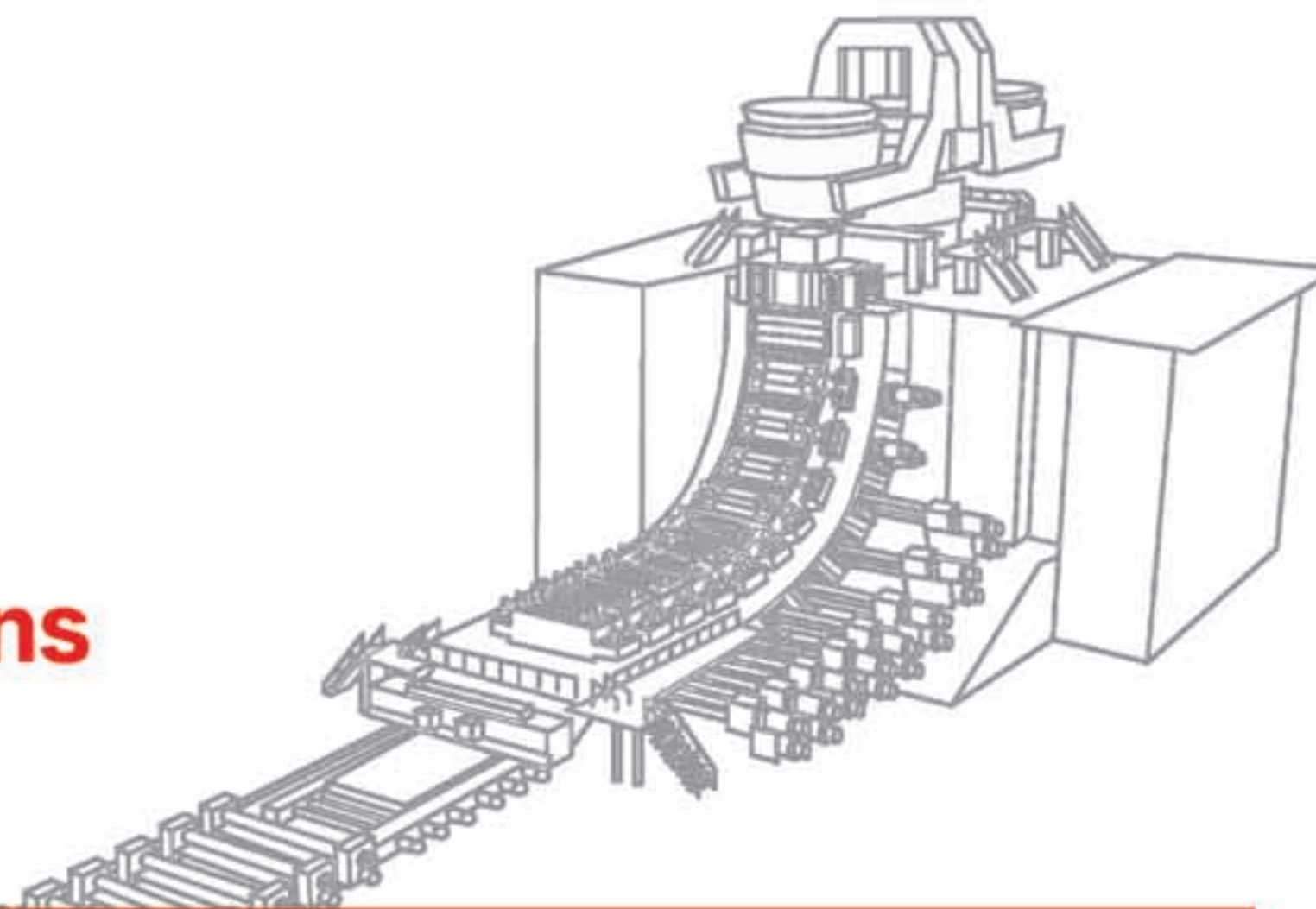
比标准产品承受更大的轴向载荷比。

The complex radio capacity of axial and radial load (Fa/Fr) is bigger than standard bearings.

冶金行业应用 Primary Metal Applications

冶金生产设备通常在高温、高压、重负荷、多粉尘的恶劣条件下连续作业，对设备性能有极高要求。帝达贝高品质轴承有助于客户设备的稳定运行。帝达贝产品主要应用于连铸机、热轧前后及加热炉的输送辊道等。我们的连铸机系列产品应用于结晶器振动装置、扇形段及冷却段输送辊道，已在国内外多家钢厂的新生产线上成功运行；同时，作为钢铁企业日常维修部件的可靠供应商，我们的产品也广泛应用于冶金齿轮箱、风机、振动筛、输送机等设备。

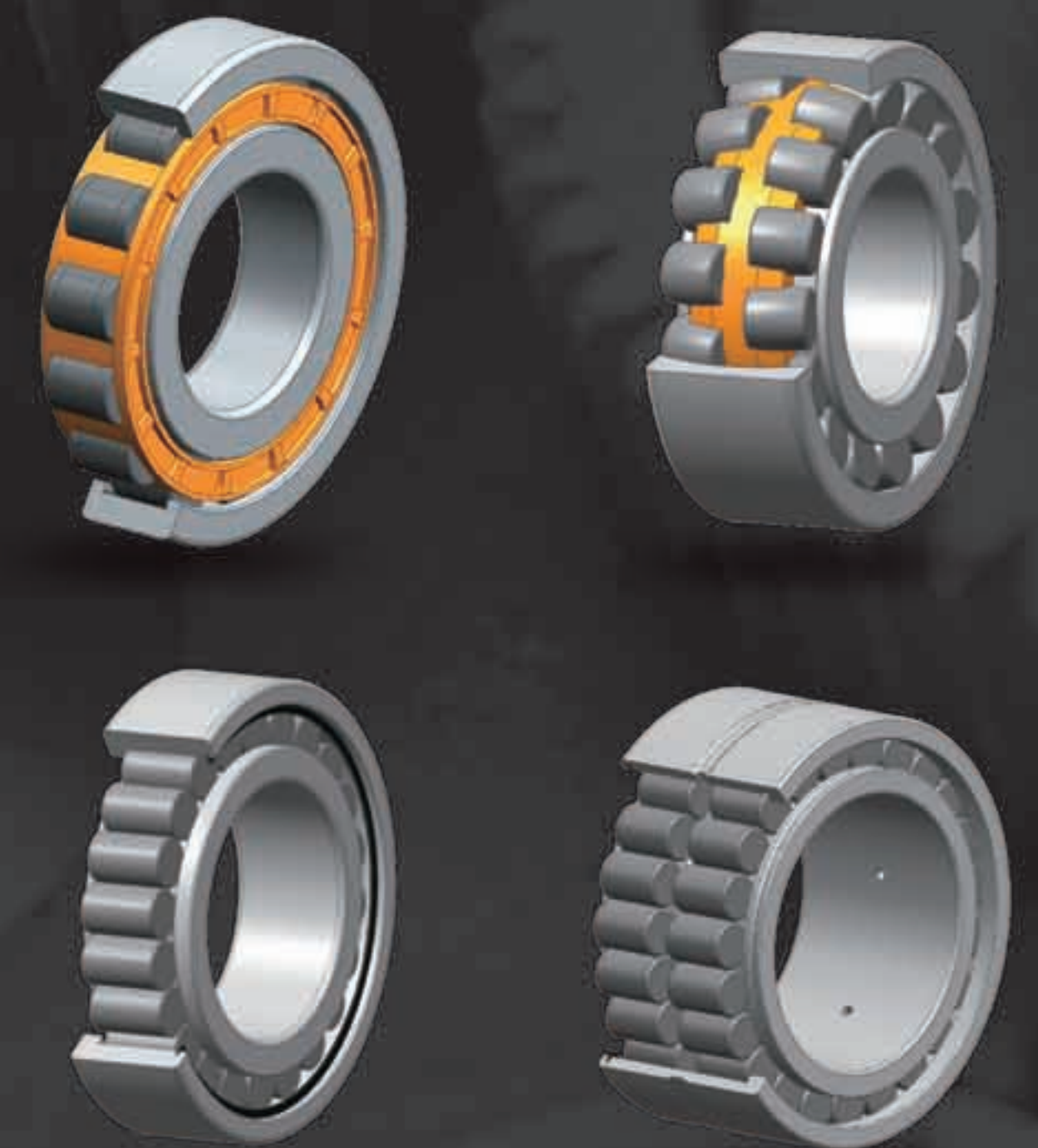
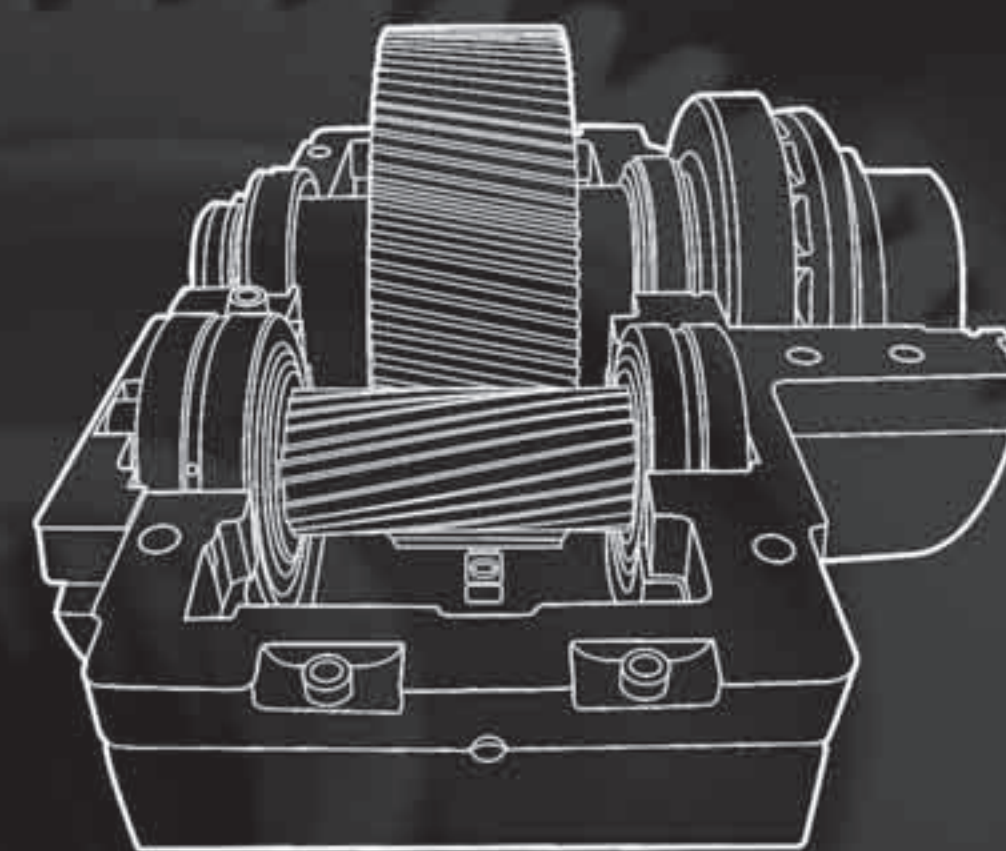
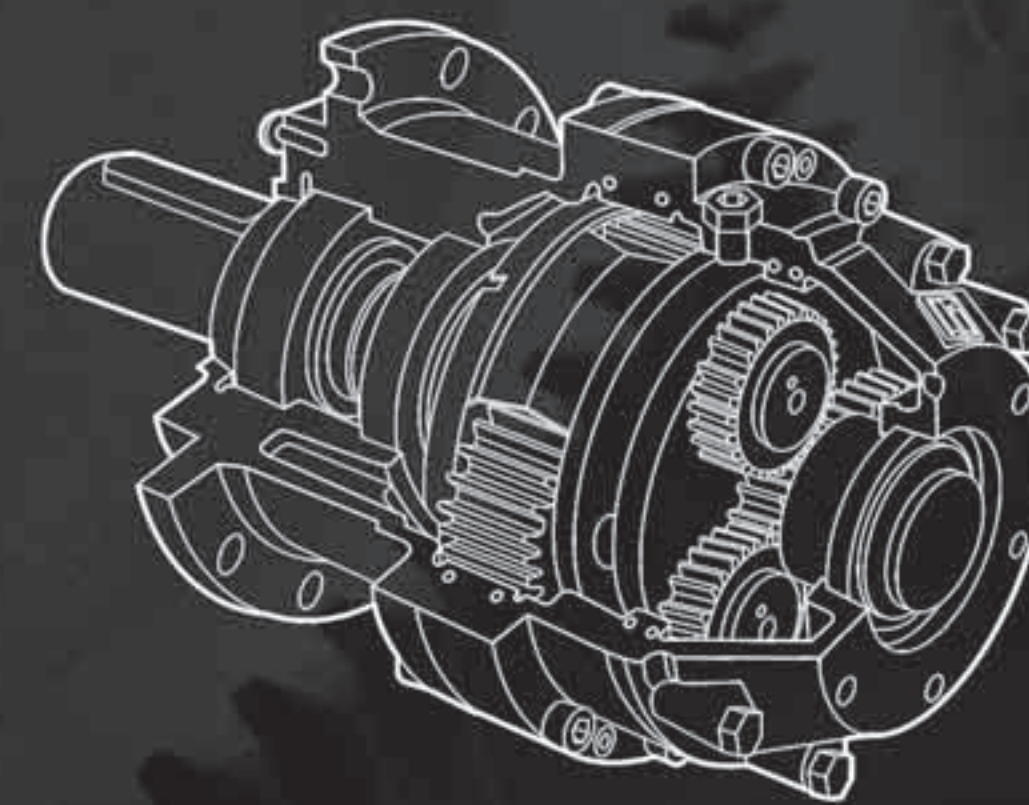
Working environment of the equipments that used at Metallurgical industry need continuous operation in the harsh conditions that under high temperature, high pressure, heavy load and heavy dust, so they have high requirements for equipment performance. TWB high quality bearing contribute stable operation of customer equipment. Main applications for TWB bearing used on continuous casting machine, input and output conveyors for hot rolling mill and heating furnace etc. Our products applied on continuous casting machine including mould oscillation device, conveying roller of sector section and cooling section, and already have been successfully put into normal operation in many new production lines of steel mills at home and abroad. At the same time, as a reliable supplier for daily maintenance in iron and steel enterprises, our products are also widely used in equipment such as gear box, Blower & fan, oscillating screen, conveyor etc. in metallurgical industry.



齿轮箱应用 Gearbox Applications

齿轮箱的主要功能是变速，改变扭矩，一般不间断连续运行。要求轴承具有高可靠性、长寿命、低噪音。针对齿轮箱行业的应用特点，帝达贝选用更加纯净的轴承钢，通过提高轴承加工精度等措施开发出多个系列齿轮箱轴承，以更优性价比为客户降低成本、提高效率。

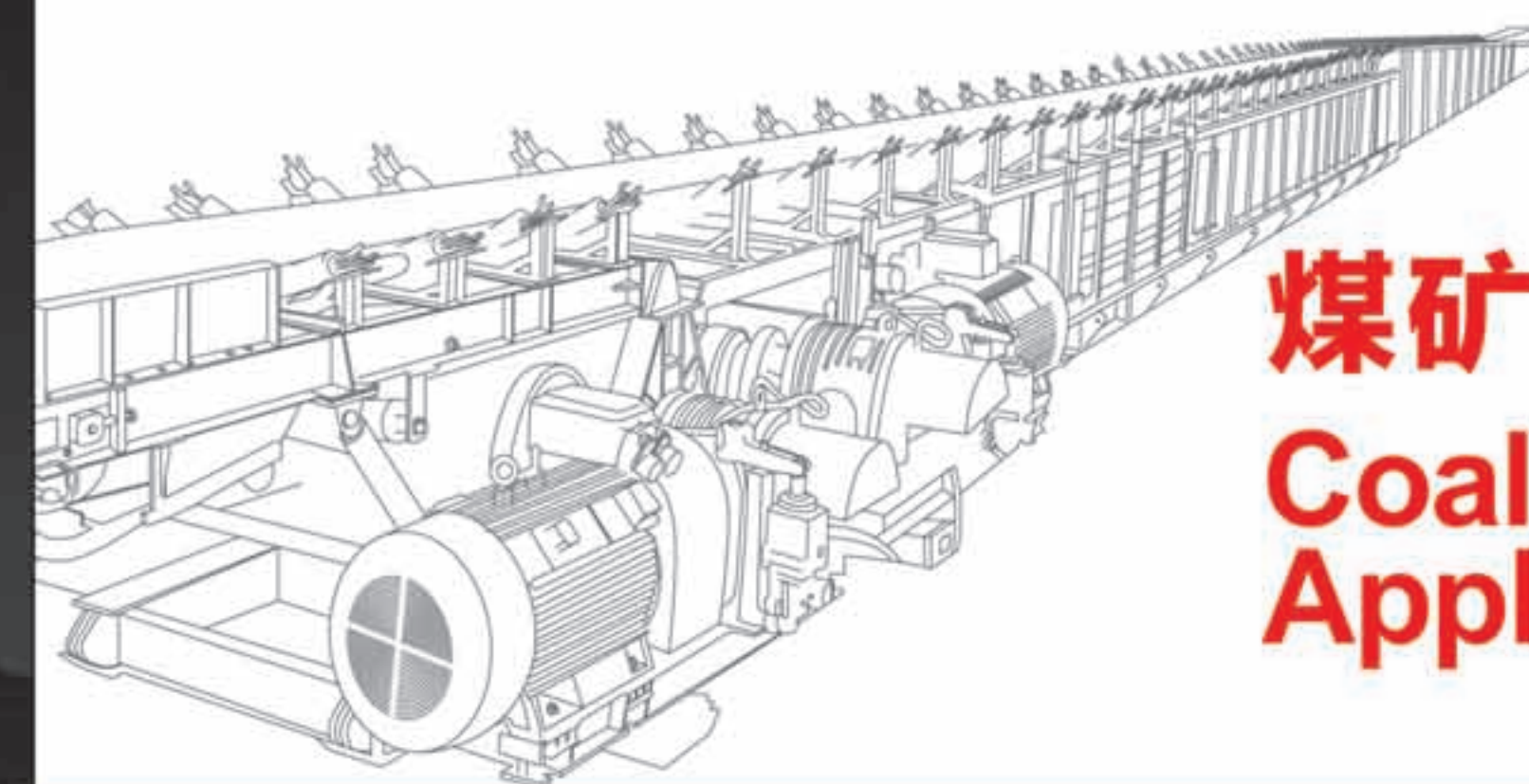
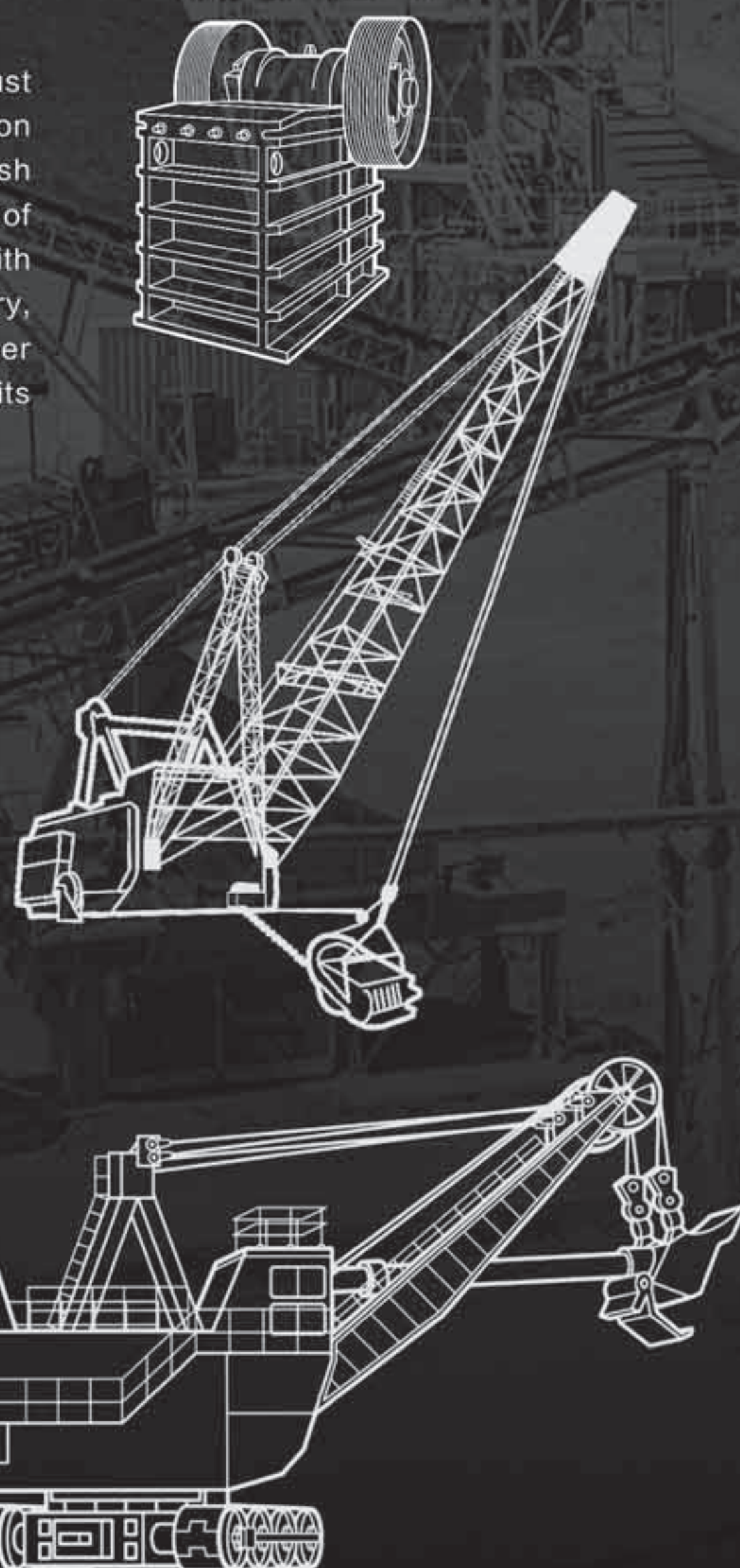
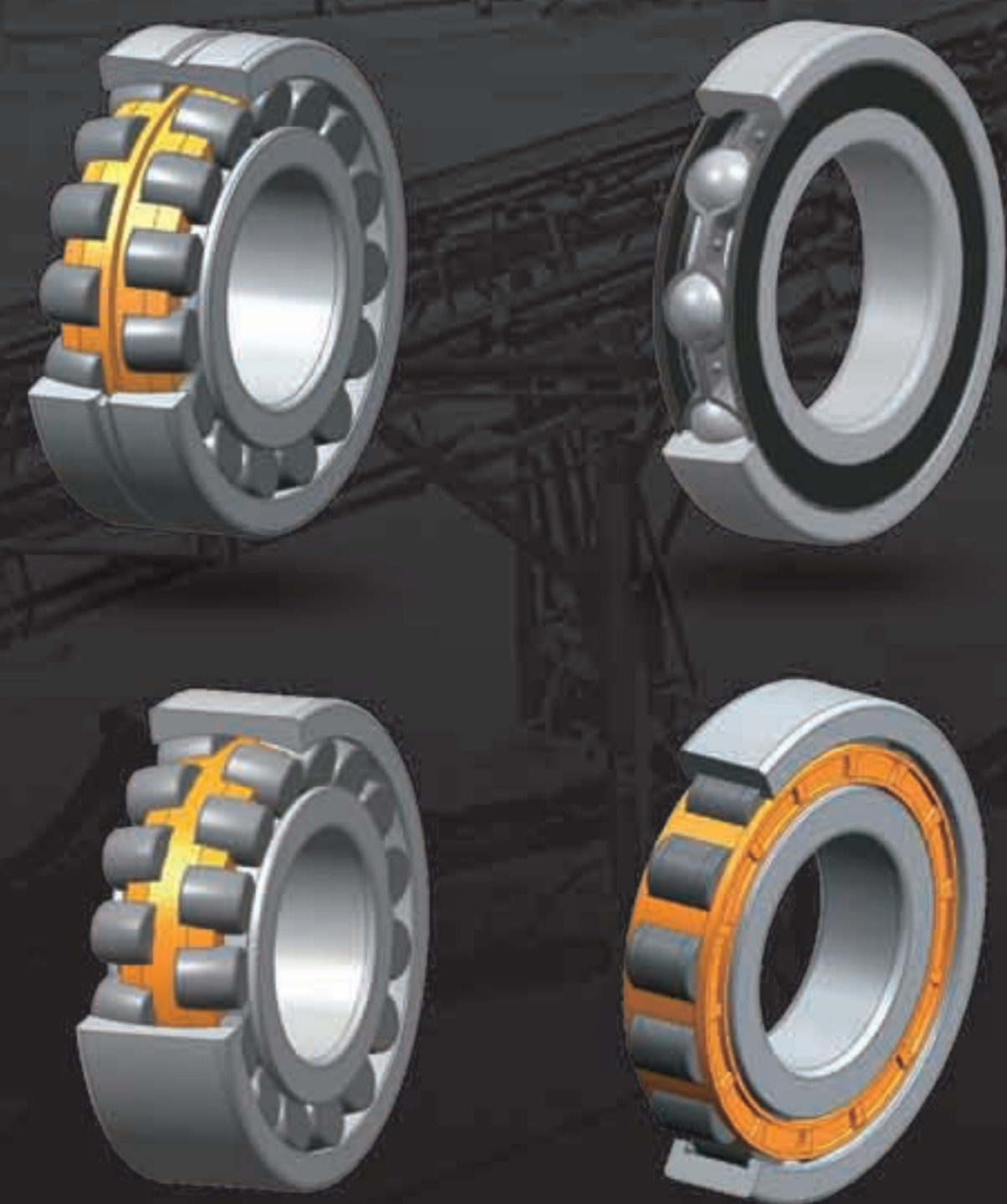
The main function of gearbox is to change speed, change torque, and generally run continuously without interruption. The bearings are required to have high reliability, long life and low noise. According to the application characteristics of the gearbox industry, TWB develops several series of gearbox bearings through selecting more pure bearing steel and improving the bearing manufacturing precision, to help customer to reduce the cost and improve the efficiency with these high cost performance bearing.



采矿业应用 Mining Applications

采矿设备通常在粉尘、泥水等恶劣环境下运行，需承受低速重载、冲击、振动等极端应用工况，其严酷的作业环境对设备的可靠运行是极大的挑战。帝达贝更具耐用性、可靠性的矿机专用系列产品在业内已有二十多年的成功配套经验，有效保证了客户设备的持续稳定运行，减少非计划停机，为客户提升了效益。

Mining equipment usually operates under harsh environments such as dust and muddy water condition, and needs to bear extreme application conditions such as low speed and heavy load, impact and vibration. Its harsh operating environment causes a great challenge to the reliable operation of the equipment. TWB has more than 20 years of successful experience with providing more durable and reliable series bearings for mining industry, effectively ensure the continuous and stable operation of customer equipment, reduce unplanned machine downtime, and improve the benefits for customers.



煤矿机械应用 Coal Mine Machinery Applications



煤矿机械的特点是结构紧凑，安全可靠性好，设备成套使用，生产效率高。要求轴承在重负荷、高冲击、高污染条件下安全可靠运行。帝达贝根据该行业特点开发了多品种专用轴承。采用特殊轴承钢，独特的产品设计，特殊的热处理，满足在高污染、冲击负荷条件下长寿命的要求。

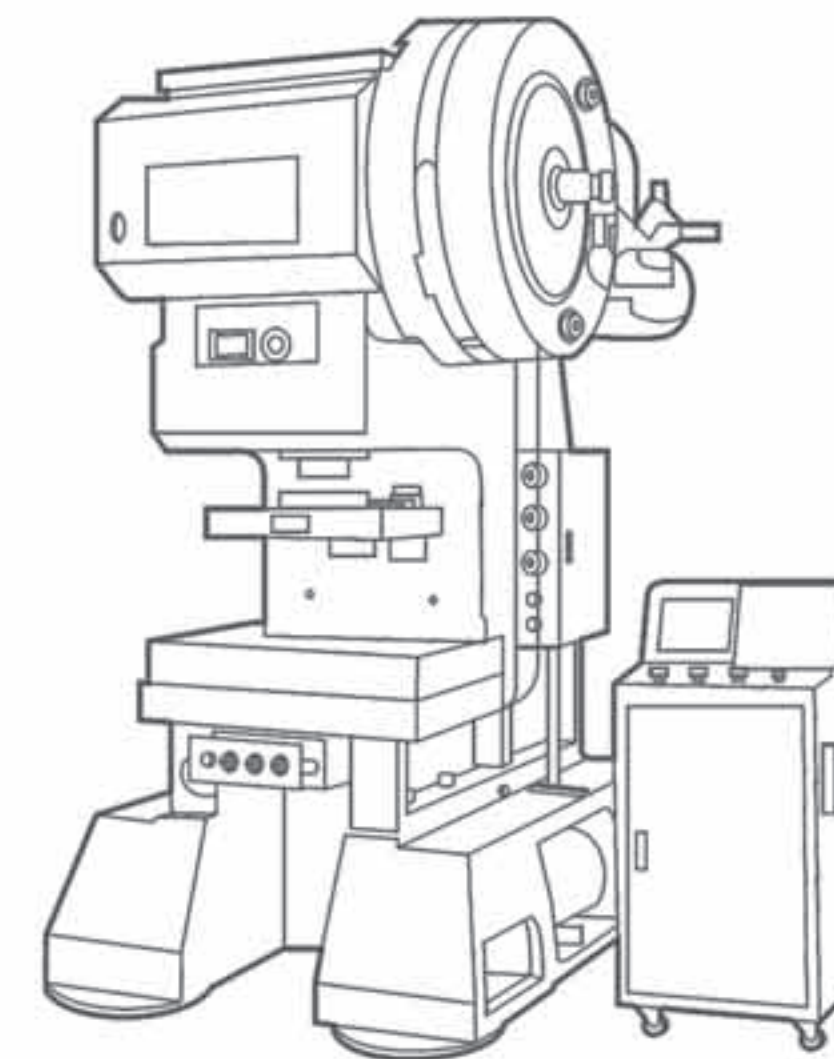
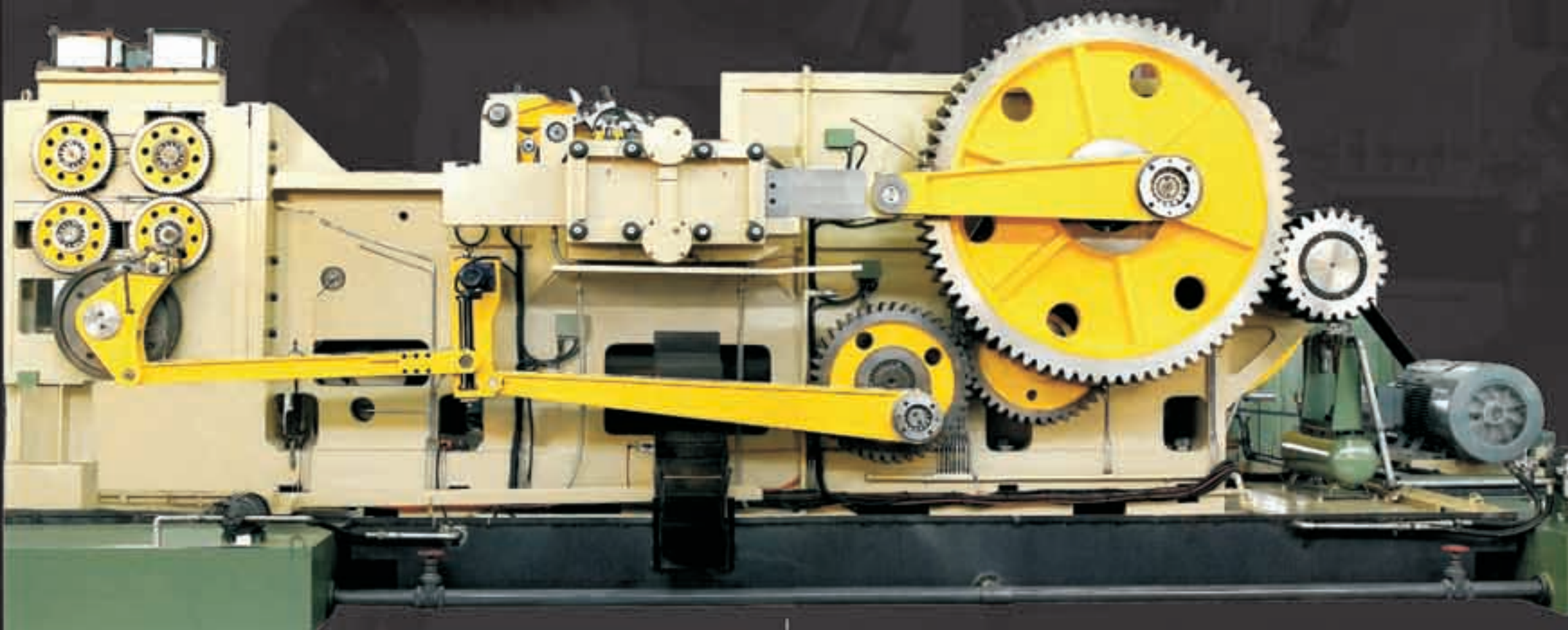
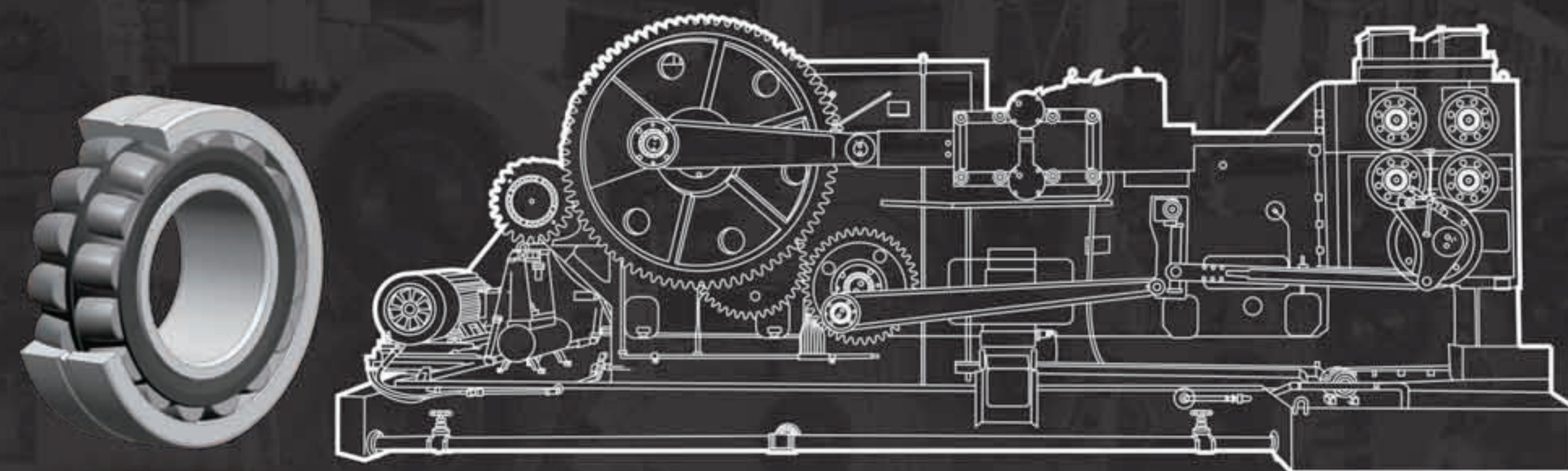
Coal mine machinery is characterized by compact structure, good safety and reliability, complete use of equipment and high manufacturing efficiency. The bearings are required to operate safely and reliably under heavy load, high impact and high pollution conditions. According to the characteristics of the industry, TWB developed a variety of special bearings with special bearing steel, unique product design and special heat treatment, to meet the bearing long life requirement under the conditions of high pollution and impact load.



冷镦机应用 Cold Heading Machinery Applications

冷镦机行业轴承工况恶劣，循环冲击载荷大，润滑条件差，杂质多易磨损。因为突发性维修成本高，客户对轴承耐磨性、可靠性及寿命有着更高的要求。帝达贝冷镦机专用系列轴承选用优质原材料和特殊定制保持架，优化结构设计，采用专有热处理工艺，轴承具有高承载、耐磨损、抗冲击、长寿命的特性，是替代进口的理想选择。

In cold heading machine industry, bearing working condition is bad, the cycle impact load is big, the lubrication condition is poor, there are many impurities produced during operation, and the bearing is easy to wear. Because of the high cost of emergency maintenance, customers have higher requirements for bearing wear resistance, reliability and working life. TWB special series bearings for cold heading machine industry are selected from high quality raw materials, special customized retainers, optimized bearing design, and adopted special heat treatment process. The TWB bearings have the characteristics of high load, wear resistance, impact resistance and long life, so they are the best choice for import substitution.

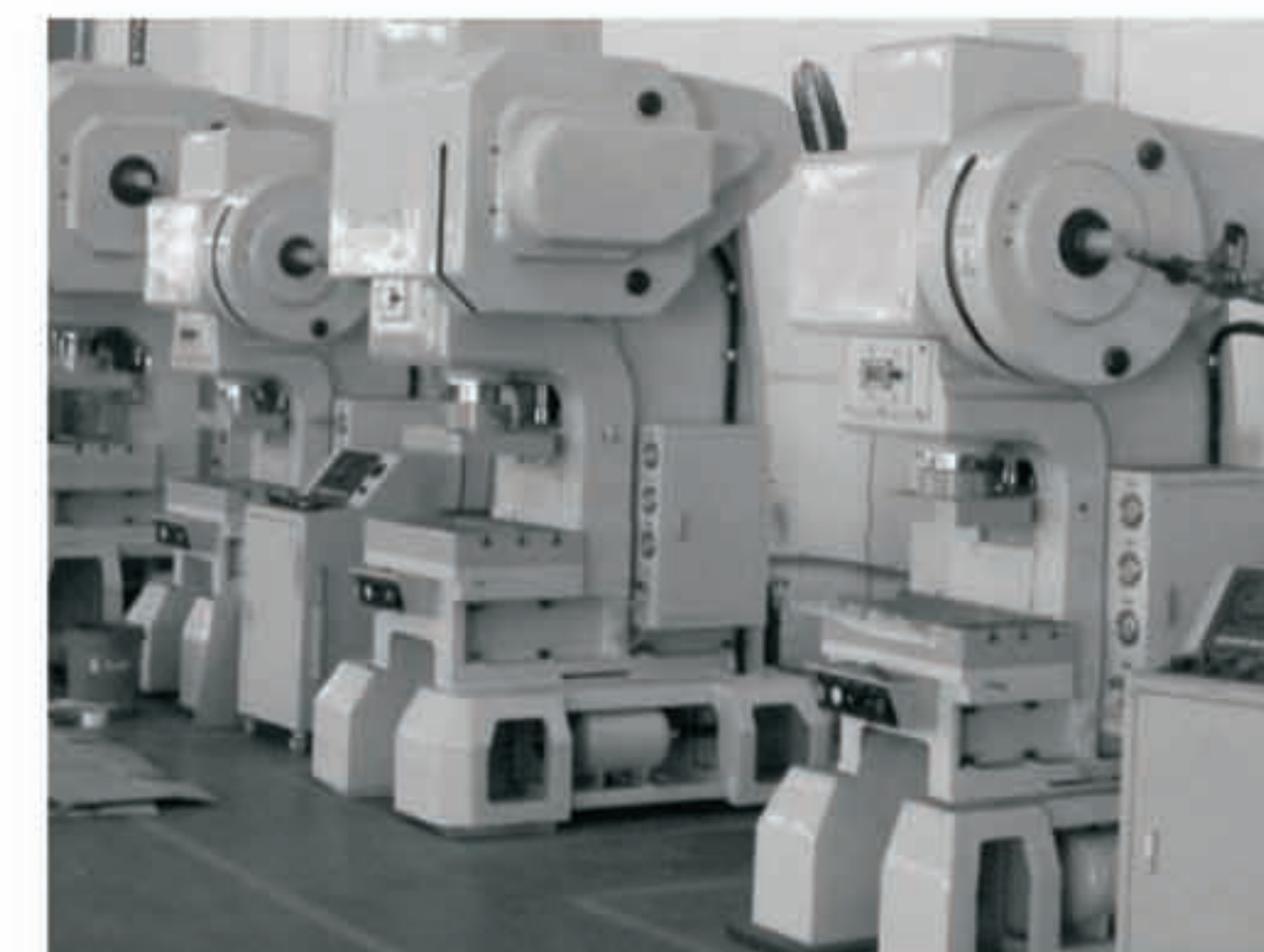


高速冲床应用 High Speed Press Applications

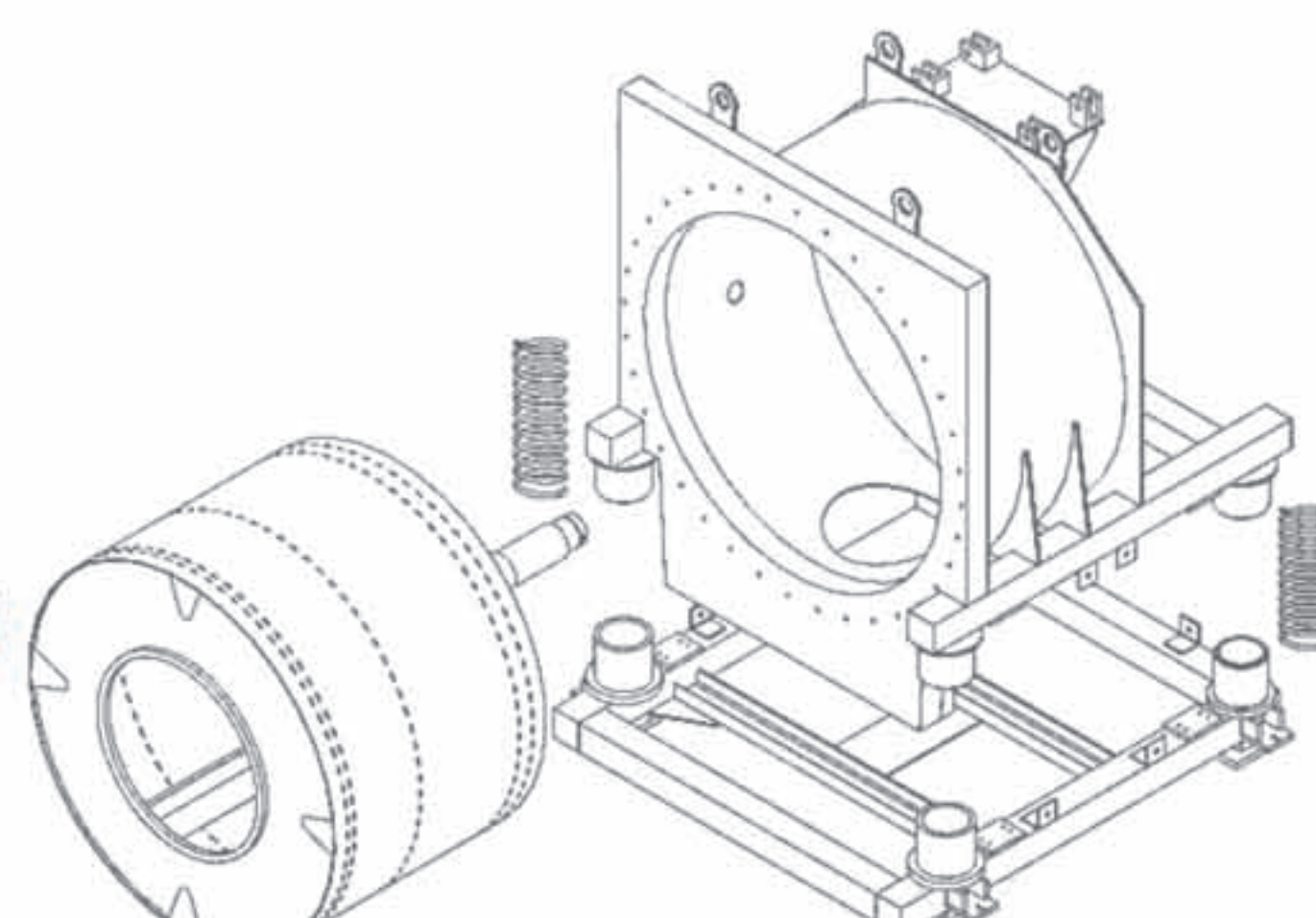


帝达贝高速冲床专用系列轴承，通过选用优质钢材和高强度保持架，设计上优化结构，工艺上提高加工精度，采用专有热处理工艺，制造出抗冲击、耐磨损、高转速、低振动的高速冲床专用轴承，实现轴承的长寿命、高可靠和节能化。

TWB special series bearings for high-speed press industry, through choosing the high quality steel and high strength cage, optimizing the structure design, improving manufacturing precision, adopting special heat treatment process, to produce special high speed press bearing with shock resistance, wear resistance, high speed, low vibration, and realize long life, high reliability and energy saving for bearing.



洗涤机械应用 Laundry Machinery Applications



为更好满足洗涤机械在高转速、高温升的条件下平稳运行的应用要求，帝达贝改进工艺标准，为行业提供了更高精度的专用轴承系列，既满足洗涤机械较高承载与高速运转要求，运行更安静平稳，又能有效减缓运转时产生的发热，提高使用寿命。经过十多年的应用验证，帝达贝在业内建立了高品质、性能稳定、长寿命的口碑，是高端洗涤机械的更优选择。

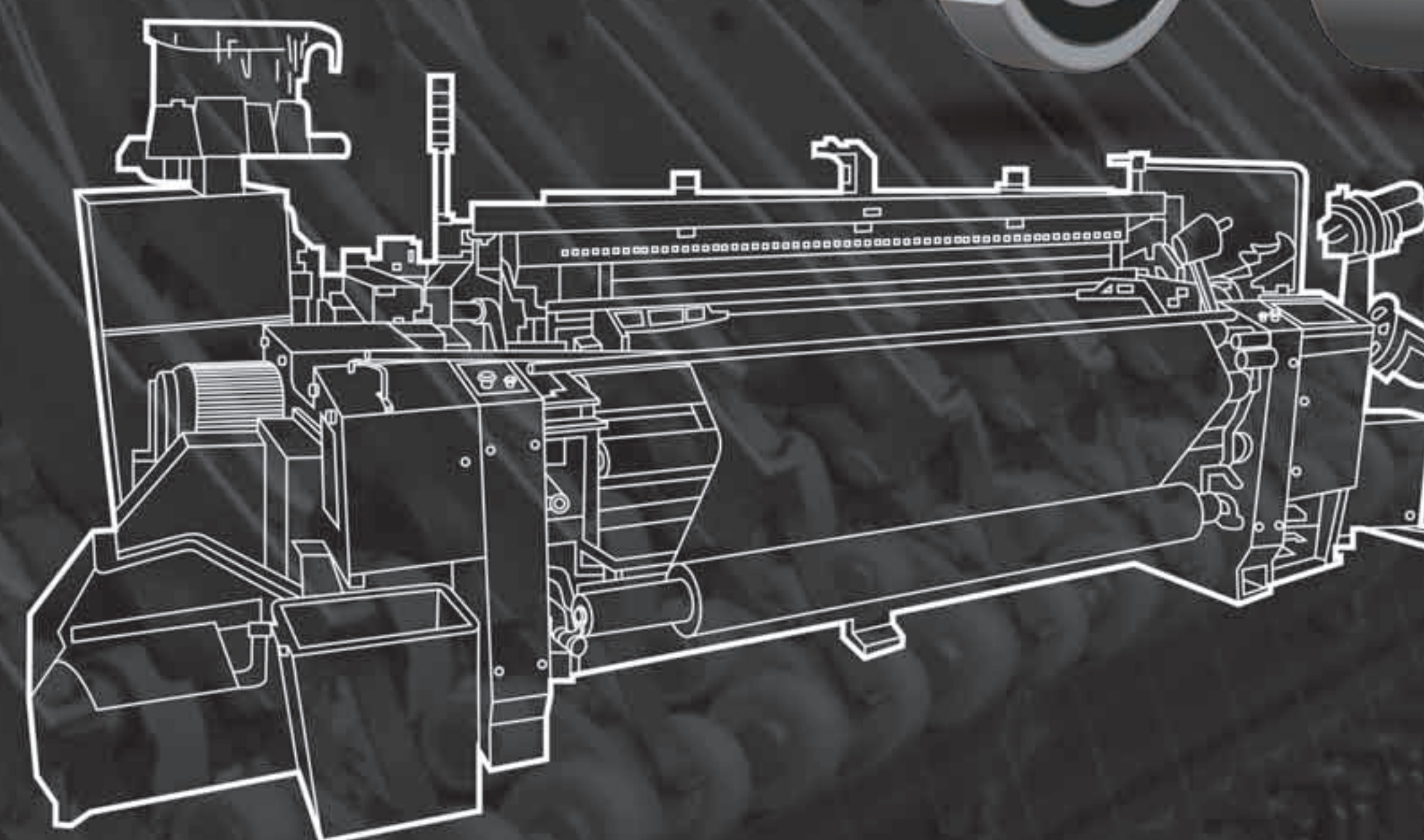
To better meet the laundry machine smoothly running requirement under the condition of high speed, high temperature rising, TWB improve manufacturing process standards, provides a series of special bearing with higher precision for this industry. Not only meet the requirement for higher load and high speed, running smoothly and quietly of washing machine, but also effectively reduce heat generating when machine operate and increase machine service life. After more than ten years' application verification, TWB has established a reputation of high quality, stable performance and long life in this industry, become the best choice for high-end washing machines.



纺织机械应用 Textile Machinery Applications

随着纺织机械不断向轻型化、多功能、高速化方向发展，对配套轴承的结构、性能、可靠性提出了更高的要求。帝达贝全系列产品在纺机领域得到广泛应用，以高转速、低振动、低噪音、长寿命赢得客户的长期信赖。

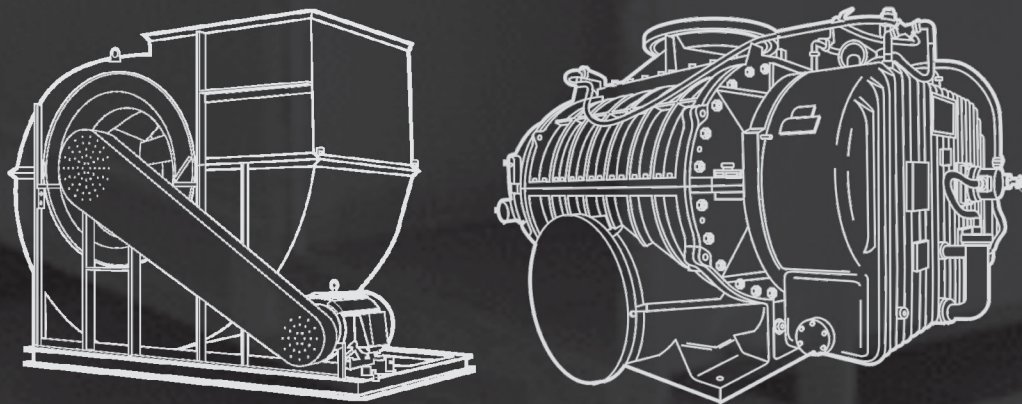
With the development of textile machinery towards light, multi-function and high-speed, higher requirements have been put forward for the structure, performance and reliability of supporting bearings. The whole series of TWB product are widely used and win the long-term trust of customers in the field of textile machine, with high speed, low vibration, low noise, and long life.



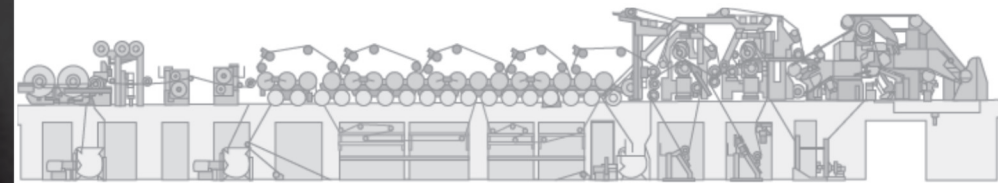
风机应用 Blower & Fan Applications

风机是用于压缩气体或输送气体的机械，一般用于通风、排尘或冷却。风机行业对轴承的性能需求参差不齐，帝达贝立足于较高端的风机应用，建立了低噪音、高稳定、长寿命的市场口碑。几十年如一日，以优质、稳定的产品，为客户有效解决连续、高速运行导致的轴承高损耗，以及轴承易发热、噪音大的问题。

Blower & fan is machinery used to compressing gas or conveying gas, generally used for ventilating, dust exhausting or cooling. The fan industry has uneven performance requirements for bearings. TWB is based on higher-end fan applications and already has established a product reputation of low noise, high stability and long life. For decades, the company has been providing high-quality and stable products to customers, effectively solve high bearing loss issues caused by continuous and high-speed operation, as well as bearing heating and noise issues.



造纸机械应用 Paper Machinery Applications



造纸设备种类繁多，运行环境千差万别，具有重载、高速、有冲击载荷、温度高、湿度大的特点。帝达贝全系列产品能满足造纸设备不同部位的应用需求，有效应对重载、高温、高速的应用环境，确保设备长期、可靠运行，是多家知名造纸机械企业的可靠合作伙伴。



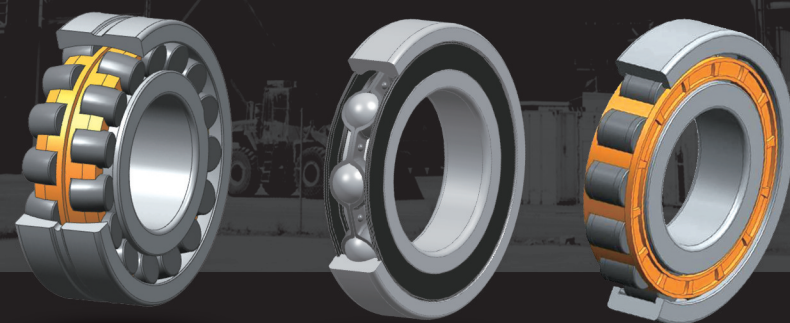
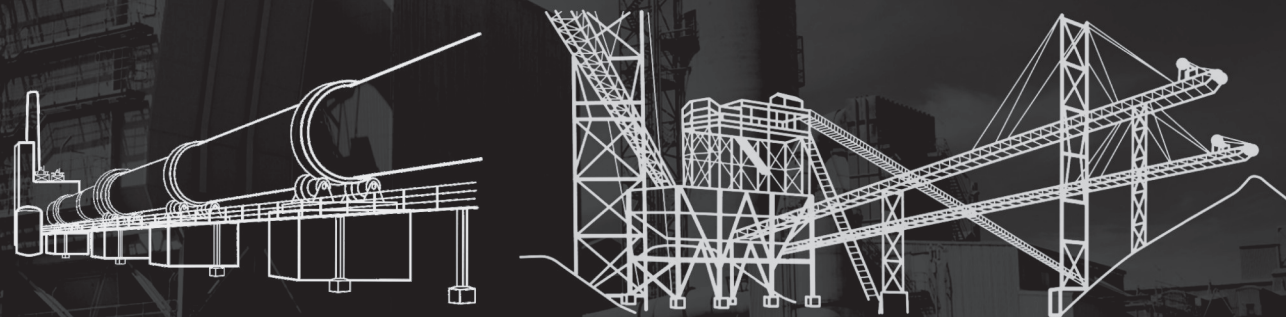
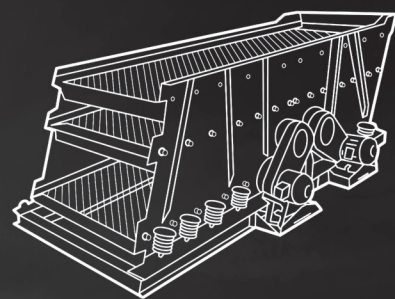
There are many types of papermaking equipment, and the operating environment varies from place to place. It has the characteristics of heavy load, high speed, impact load, high temperature and high humidity. The whole series of TWB products can meet the application requirements of different parts of paper making equipment, effectively deal with the application environment of heavy load, high temperature and high speed, and ensure the long-term and reliable operation of the equipment. Now TWB is the reliable partner of many well-known paper making machinery enterprises.



水泥行业应用 Cement Industry Applications

水泥生产主要包括矿石采集及破碎、生料制备与预均化、煅烧、熟料粉磨等工序，生产设备类别复杂、运行环境恶劣、运作连续、可靠性要求高。帝达贝全系列轴承满足水泥行业需求，具备高性能、高可靠、长寿命的特性，帮助客户提高设备连续运行的可靠性，减少用户维护和修理的成本。

The main processes for Cement production include ore collection and crushing, raw meal preparation and pre-homogenization, calcination, clinker grinding etc. The categories of production equipment have complex, poor operating environment, continuous operation and high reliability requirements. The full range of TWB bearings meet the needs of the cement industry, with high performance, high reliability, long life characteristics, to help customers improve the reliability of continuous operation of equipment, reduce maintenance and repair costs.



TWB

TWB Power Inside
动力之内 帝达贝



沈阳瑞思达轴承有限公司
SHENYANG TOTAL BEARING CO.,LTD.
Tel: 024 22945833 22923833 24853899
Fax: 024 88729249
Mobile: 13940483518 15640413155 (微信)
Web: <https://www.rstbearing.com.cn>

