



[Correction Booklet]

**Ball & Roller Bearings**  
(CAT.NO.B2001E-7)

Double-row tapered roller bearings  
Fatigue load limits

TDO type  
(B268~B282)

TDI type  
(B284~B288)

This booklet includes corrections for the fatigue load limits in the section on double-row tapered roller bearings (TDO and TDI types) in the Ball & Roller Bearings Catalog.

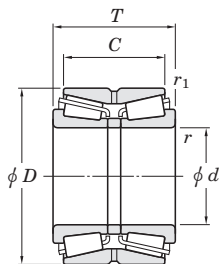
Due to space limitations, the "Limiting speeds" column in the original document has been replaced with the "Bearing No." column.

JTEKT CORPORATION

# Double-row tapered roller bearings

## TDO type

$d$  25 ~ (60) mm



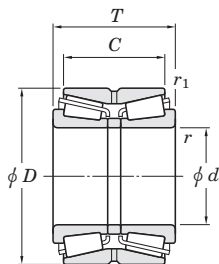
Boundary dimensions (mm)						Basic load ratings (kN)		Fatigue load limit (kN) $C_u$	Bearing No.
$d$	$D$	$T$	$C$	$r_{\min.}$	$r_{1\min.}$	$C_r$	$C_{0r}$		
25	62	40	29.5	1.5	0.6	85.2	84.9	11.6	46T30305DJR/29.5
30	72	45	31.5	1.5	0.6	109	110	15.4	46T30306DJR/31.5
35	80	51	35.5	2	0.6	135	138	19.7	46T30307DJR/35.5
40	80	45	37.5	1.5	0.6	134	138	20.6	46T30208JR/37.5
	80	55	43.5	1.5	0.6	166	182	27.3	46T32208JR/43.5
	90	56	39.5	2	0.6	172	180	26.2	46T30308DJR/39.5
	90	56	45.5	2	0.6	194	202	31.0	46T30308JR/45.5
45	85	47	37.5	1.5	0.6	144	155	23.1	46T30209JR/37.5
	85	55	43.5	1.5	0.6	180	207	31.2	46T32209JR-1/43.5
	100	60	41.5	2	0.6	204	214	31.7	46T30309DJR/41.5
	100	60	49.5	2	0.6	242	256	39.8	46T30309JR/49.5
50	90	49	39.5	1.5	0.6	164	183	27.6	46T30210JR/39.5
	90	55	43.5	1.5	0.6	182	211	31.8	46T32210JR/43.5
	110	64	51.5	2	0.6	295	305	47.9	46T30310JR/51.5
	110	73	52.5	2	0.6	247	266	39.5	46T30310DJR/52.5
	110	90	71.5	2	0.6	378	440	68.4	46T32310JR/71.5
55	100	51	41.5	2	0.6	203	226	34.6	46T30211JR/41.5
	100	60	48.5	2	0.6	230	266	41.0	46T32211JR-1/48.5
	120	70	49	2	0.6	276	297	44.6	46T30311DJR/49
	120	70	57	2	0.6	320	341	53.9	46T30311JR/57
	120	97	76	2	0.6	429	500	78.2	46T32311JR/76
60	110	53	43.5	2	0.6	228	254	39.4	46T30212JR/43.5
	110	66	54.5	2	0.6	282	334	51.8	46T32212JR/54.5
	130	74	51	2.5	1	327	359	54.2	46T30312DJR/51
	130	74	59	2.5	1	372	401	63.8	46T30312JR/59

[Remark] Bearings not shown above (e.g. inch series) are shown in catalog "large size ball & roller bearings".

# Double-row tapered roller bearings

## TDO type

$d$  (60) ~ (90) mm



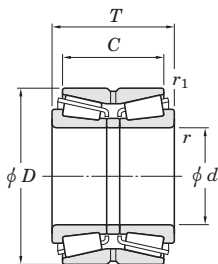
Boundary dimensions (mm)						Basic load ratings (kN)		Fatigue load limit (kN) $C_u$	Bearing No.
$d$	$D$	$T$	$C$	$r_{\min.}$	$r_{1\min.}$	$C_r$	$C_{Or}$		
<b>60</b>	130	104	81	2.5	1	524	629	88.3	<b>46T32312JR/81</b>
<b>65</b>	120	56	46.5	2	0.6	275	311	48.7	<b>46T30213JR/46.5</b>
	120	73	61.5	2	0.6	337	406	63.3	<b>46T32213JR/61.5</b>
	140	79	53	2.5	1	377	417	62.8	<b>46T30313DJR/53</b>
	140	79	63	2.5	1	437	478	75.3	<b>46T30313JR/63</b>
	140	108	84	2.5	1	593	714	99.2	<b>46T32313JR/84</b>
<b>70</b>	125	59	48.5	2	0.6	296	346	54.2	<b>46T30214JR/48.5</b>
	125	74	61.5	2	0.6	363	450	70.4	<b>46T32214JR/61.5</b>
	150	83	57	2.5	1	421	470	69.8	<b>46T30314DJR/57</b>
	150	83	67	2.5	1	493	546	84.4	<b>46T30314JR/67</b>
	150	116	92	2.5	1	679	829	114	<b>46T32314JR/92</b>
<b>75</b>	115	30	26	1.5	0.6	89.9	105	14.6	<b>46215</b>
	115	38	30	1.5	0.6	153	207	31.2	<b>46215A</b>
	130	62	51.5	2	0.6	305	362	56.4	<b>46T30215JR/51.5</b>
	130	74	61.5	2	0.6	373	469	72.7	<b>46T32215JR/61.5</b>
	160	87	69	2.5	1	557	621	89.8	<b>46T30315JR/69</b>
	160	125	99	2.5	1	779	963	129	<b>46T32315JR/99</b>
<b>80</b>	125	34	30	1.5	0.6	136	155	22.6	<b>46216</b>
	140	64	51.5	2	0.6	346	405	62.3	<b>46T30216JR/51.5</b>
	140	78	63.5	2	0.6	434	542	83.1	<b>46T32216JR/63.5</b>
	170	92	73	2.5	1	630	711	99.8	<b>46T30316JR/73</b>
<b>85</b>	150	70	57	2	0.6	391	463	70.3	<b>46T30217JR/57</b>
	150	86	69	2	0.6	498	630	95.1	<b>46T32217JR/69</b>
	180	98	77	3	1	679	768	106	<b>46T30317JR/77</b>
	180	137	108	3	1	941	1170	155	<b>46T32317JR/108</b>
<b>90</b>	140	37	33	2	0.6	171	199	28.8	<b>46218</b>

[Remark] Bearings not shown above (e.g. inch series) are shown in catalog "large size ball & roller bearings".

# Double-row tapered roller bearings

## TDO type

$d$  (90) ~ 110 mm



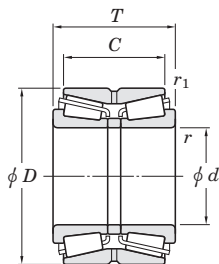
$d$	Boundary dimensions (mm)					Basic load ratings (kN)		Fatigue load limit (kN)	Bearing No.
	$D$	$T$	$C$	$r_{\min.}$	$r_{1\min.}$	$C_r$	$C_{0r}$	$C_u$	
<b>90</b>	140	46	37	2	0.6	196	266	39.3	<b>46218A</b>
	160	74	61	2	0.6	438	522	78.1	<b>46T30218JR/61</b>
	160	94	77	2	0.6	565	724	107	<b>46T32218JR/77</b>
	190	102	81	3	1	741	841	114	<b>46T30318JR/81</b>
	190	144	115	3	1	989	1 230	157	<b>46T32318JR/115</b>
<b>95</b>	170	78	63	2.5	1	496	598	88.1	<b>46T30219JR/63</b>
	170	100	83	2.5	1	667	877	128	<b>46T32219JR/83</b>
	200	108	85	3	1	798	909	122	<b>46T30319JR/85</b>
	200	151	118	3	1	1 110	1 390	178	<b>46T32319JR/118</b>
<b>100</b>	150	46	37	2	0.6	226	293	42.6	<b>46220A</b>
	165	52	46	2.5	0.6	249	305	44.1	<b>46320</b>
	165	65	52	2.5	0.6	333	443	64.7	<b>46320A</b>
	180	83	67	2.5	1	554	676	98.2	<b>46T30220JR/67</b>
	180	107	87	2.5	1	745	990	128	<b>46T32220JR/87</b>
	215	112	87	3	1	906	1 040	136	<b>46T30320JR/87</b>
	215	162	127	3	1	1 240	1 570	194	<b>46T32320JR/127</b>
<b>105</b>	190	88	70	2.5	1	618	761	105	<b>46T30221JR/70</b>
	190	115	95	2.5	1	840	1 130	146	<b>46T32221JR/95</b>
	225	116	91	3	1	995	1 160	147	<b>46T30321JR/91</b>
	225	170	133	3	1	1 360	1 730	214	<b>46T32321JR/133</b>
<b>110</b>	170	45	40	2.5	0.6	219	304	42.5	<b>46222</b>
	180	56	50	2.5	0.6	308	388	55.3	<b>46322</b>
	180	70	56	2.5	0.6	391	533	76.1	<b>46322A</b>
	200	92	74	2.5	1	695	868	116	<b>46T30222JR/74</b>
	200	121	101	2.5	1	938	1 280	161	<b>46T32222JR/101</b>
	240	118	93	3	1	1 030	1 180	150	<b>46T30322JR/93</b>
	240	181	142	3	1	1 480	1 890	230	<b>46T32322JR/142</b>

[Remark] Bearings not shown above (e.g., inch series) are shown in catalog "large size ball & roller bearings".

# Double-row tapered roller bearings

## TDO type

$d$  120 ~ (150) mm



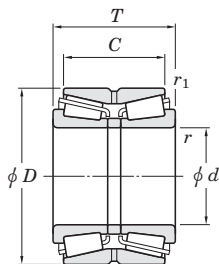
Boundary dimensions (mm)						Basic load ratings (kN)		Fatigue load limit (kN) $C_u$	Bearing No.
$d$	$D$	$T$	$C$	$r_{min.}$	$r_{1 min.}$	$C_r$	$C_{0r}$		
<b>120</b>	180	46	41	2.5	0.6	232	317	43.6	<b>46224</b>
	180	58	46	2.5	0.6	309	460	64.4	<b>46224A</b>
	200	62	55	2.5	0.6	367	470	65.7	<b>46324</b>
	200	78	62	2.5	0.6	486	672	93.9	<b>46324A</b>
	200	100	84	2.5	0.6	670	1 010	125	<b>46324AS</b>
	215	97	78	2.5	1	745	945	123	<b>46T30224JR/78</b>
	215	132	109	2.5	1	1 010	1 380	168	<b>46T32224JR/109</b>
	260	128	101	3	1	1 220	1 430	180	<b>46T30324JR/101</b>
	260	188	145	4	1.5	1 720	2 210	261	<b>46T32324JR/145</b>
<b>130</b>	200	52	46	2.5	0.6	299	425	57.8	<b>46226</b>
	200	65	52	2.5	0.6	400	618	85.0	<b>46226A</b>
	210	64	57	2.5	0.6	404	535	73.6	<b>46326</b>
	210	80	64	2.5	0.6	513	723	99.3	<b>46326A</b>
	230	98	78.5	3	1	809	1 020	131	<b>46T30226JR/78.5</b>
	230	145	117.5	3	1	1 190	1 660	200	<b>46T32226JR/117.5</b>
	280	137	107.5	4	1.5	1 410	1 670	203	<b>46T30326JR/107.5</b>
	<b>140</b>	210	53	47	2.5	0.6	299	404	54.5
210		66	53	2.5	0.6	452	639	86.9	<b>46228A</b>
225		68	61	3	1	423	564	76.1	<b>46328</b>
225		85	68	3	1	597	836	113	<b>46328A</b>
250		102	82.5	3	1	902	1 140	144	<b>46T30228JR/82.5</b>
250		153	125.5	3	1	1 360	1 920	224	<b>46T32228JR/125.5</b>
300		145	115.5	4	1.5	1 610	1 920	228	<b>46T30328JR/115.5</b>
<b>150</b>	225	56	50	3	1	348	476	63.2	<b>46230</b>
	225	70	56	3	1	472	703	94.1	<b>46230A</b>
	250	80	71	3	1	587	786	98.4	<b>46330</b>
	250	100	80	3	1	748	1 070	132	<b>46330A</b>
	270	109	87	3	1	1 040	1 330	162	<b>46T30230JR/87</b>

[Remark] Bearings not shown above (e.g. inch series) are shown in catalog "large size ball & roller bearings".

# Double-row tapered roller bearings

## TDO type

$d$  (150) ~ (200) mm



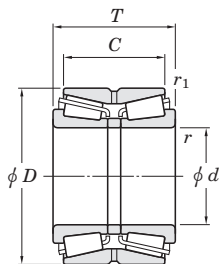
$d$	Boundary dimensions (mm)					Basic load ratings (kN)		Fatigue load limit (kN)	Bearing No.
	$D$	$T$	$C$	$r_{\min.}$	$r_{1\min.}$	$C_r$	$C_{0r}$	$C_u$	
<b>150</b>	270	164	130	3	1	1 510	2 130	245	<b>46T32230JR/130</b> <b>46T30330JR/120</b>
	320	154	120	4	1.5	1 800	2 160	257	
<b>160</b>	240	60	53	3	1	405	565	74.0	<b>46232</b> <b>46232A</b> <b>46332</b> <b>46332A</b> <b>46T30232JR/91</b> <b>46T32232JR/144</b>
	240	75	60	3	1	508	756	99.6	
	270	86	76	3	1	695	950	115	
	270	108	86	3	1	871	1 270	150	
	290	115	91	3	1	1 160	1 500	179	
	290	178	144	3	1	1 700	2 420	273	
<b>170</b>	260	67	60	3	1	480	642	83.4	<b>46234</b> <b>46234A</b> <b>46334</b> <b>46334A</b> <b>46T30234JR/97</b> <b>46T32234JR/152</b>
	260	84	67	3	1	629	969	125	
	280	88	78	3	1	754	1 050	125	
	280	110	88	3	1	938	1 390	163	
	310	125	97	4	1.5	1 330	1 730	205	
	310	192	152	4	1.5	1 930	2 760	303	
<b>180</b>	280	74	66	3	1	582	801	98.9	<b>46236</b> <b>46236A</b> <b>46336</b> <b>46336A</b> <b>46T30236JR/99</b> <b>46T32236JR/152</b>
	280	93	74	3	1	732	1 080	131	
	300	96	85	4	1.5	872	1 240	149	
	300	120	96	4	1.5	1 080	1 630	190	
	320	127	99	4	1.5	1 320	1 740	204	
	320	192	152	4	1.5	2 060	3 030	328	
<b>190</b>	290	75	67	3	1	610	866	106	<b>46238</b> <b>46238A</b> <b>46338</b> <b>46338A</b> <b>46T30238JR/105</b> <b>46T32238JR/160</b>
	290	94	75	3	1	793	1 170	140	
	320	104	92	4	1.5	1 020	1 450	168	
	320	130	104	4	1.5	1 230	1 860	212	
	340	133	105	4	1.5	1 560	2 060	235	
	340	204	160	4	1.5	2 340	3 480	373	
<b>200</b>	310	82	73	3	1	716	1 040	123	<b>46240</b>

[Remark] Bearings not shown above (e.g. inch series) are shown in catalog "large size ball & roller bearings".

# Double-row tapered roller bearings

## TDO type

$d$  (200) ~ (300) mm



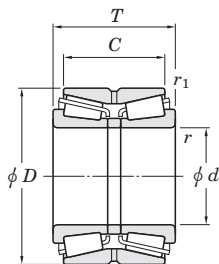
$d$	Boundary dimensions (mm)					Basic load ratings (kN)		Fatigue load limit (kN)	Bearing No.
	$D$	$T$	$C$	$r_{\min.}$	$r_{1\min.}$	$C_r$	$C_{0r}$	$C_u$	
<b>200</b>	310	103	82	3	1	893	1 380	160	<b>46240A</b>
	340	112	100	4	1.5	1 100	1 580	180	<b>46340</b>
	340	140	112	4	1.5	1 350	2 040	226	<b>46340A</b>
	360	142	110	4	1.5	1 700	2 240	252	<b>46T30240JR/110</b>
	360	218	174	4	1.5	2 660	3 760	399	<b>46T32240JR/174</b>
<b>220</b>	340	90	80	4	1.5	849	1 240	142	<b>46244</b>
	340	113	90	4	1.5	1 040	1 620	183	<b>46244A</b>
	370	120	107	5	1.5	1 260	1 810	202	<b>46344</b>
	370	150	120	5	1.5	1 600	2 470	272	<b>46344A</b>
	400	150	114	4	1.5	2 170	2 880	320	<b>46T30244JR/114</b>
<b>240</b>	360	92	82	4	1.5	962	1 430	159	<b>46248</b>
	360	115	92	4	1.5	1 240	1 980	216	<b>46248A</b>
	400	128	114	5	1.5	1 490	2 180	241	<b>46348</b>
	400	160	128	5	1.5	1 940	3 060	325	<b>46348A</b>
<b>260</b>	400	104	92	5	1.5	1 170	1 830	200	<b>46252</b>
	400	130	104	5	1.5	1 520	2 480	265	<b>46252A</b>
	440	144	128	5	1.5	1 900	2 880	302	<b>46352</b>
	440	180	144	5	1.5	2 430	3 960	408	<b>46352A</b>
<b>280</b>	420	106	94	5	1.5	1 260	1 970	213	<b>46256</b>
	420	133	106	5	1.5	1 570	2 610	277	<b>46256A</b>
	460	146	130	6	2	1 950	2 930	308	<b>46356</b>
	460	183	146	6	2	2 470	3 940	407	<b>46356A</b>
<b>300</b>	460	118	105	5	1.5	1 630	2 400	254	<b>46260</b>
	460	148	118	5	1.5	2 050	3 230	331	<b>46260A</b>
	500	160	142	6	2	2 320	3 540	366	<b>46360</b>
	500	200	160	6	2	2 860	4 630	463	<b>46360A</b>

[Remark] Bearings not shown above (e.g. inch series) are shown in catalog "large size ball & roller bearings".

# Double-row tapered roller bearings

## TDO type

$d$  (300) ~ 420 mm



$d$	Boundary dimensions (mm)					Basic load ratings (kN)		Fatigue load limit (kN) $C_u$	Bearing No.
	$D$	$T$	$C$	$r_{\min.}$	$r_{1\min.}$	$C_r$	$C_{0r}$		
<b>300</b>	500	200	160	6	1.5	3 140	4 650	474	<b>46360D</b>
<b>320</b>	480	121	108	5	1.5	1 800	2 700	283	<b>46264</b>
	480	151	121	5	1.5	2 060	3 410	342	<b>46264A</b>
	540	176	157	6	2	2 880	4 570	457	<b>46364</b>
	540	220	176	6	2	3 280	5 390	528	<b>46364A</b>
<b>340</b>	520	133	118	6	2	1 940	3 070	314	<b>46268</b>
	520	165	133	6	2	2 420	4 060	406	<b>46268A</b>
	580	190	169	6	2	2 980	4 620	454	<b>46368</b>
	580	238	190	6	2	3 820	6 340	606	<b>46368A</b>
<b>360</b>	540	134	120	6	2	2 070	3 290	332	<b>46272</b>
	540	169	134	6	2	2 530	4 230	419	<b>46272A</b>
	600	192	171	6	2	3 600	4 880	473	<b>46372</b>
	600	240	192	6	2	4 590	7 230	689	<b>46372A</b>
<b>380</b>	560	135	122	6	2	2 190	3 560	355	<b>46276</b>
	560	171	135	6	2	2 810	4 670	456	<b>46276A</b>
	620	194	173	6	2	3 380	5 220	500	<b>46376</b>
	620	243	194	6	2	4 390	7 360	683	<b>46376A</b>
<b>400</b>	600	148	132	6	2	2 350	3 720	366	<b>46280</b>
	600	185	148	6	2	3 030	5 150	491	<b>46280A</b>
	650	200	178	6	3	3 740	5 920	565	<b>46380</b>
	650	250	200	6	3	5 110	8 850	811	<b>46380A</b>
<b>420</b>	620	150	134	6	2	2 520	4 130	399	<b>46284</b>
	620	188	150	6	2	3 390	5 660	534	<b>46284A</b>
	700	224	200	6	3	4 650	6 880	647	<b>46384</b>
	700	280	224	6	3	6 040	9 620	861	<b>46384A</b>

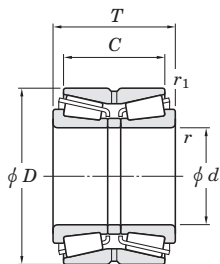
[Remark] Bearings not shown above (e.g. inch series) are shown in catalog "large size ball & roller bearings".



# Double-row tapered roller bearings

## TDO type

$d$  440 ~ 500 mm



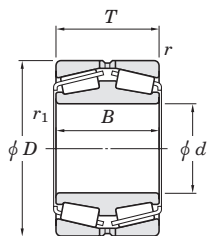
$d$	Boundary dimensions (mm)					Basic load ratings (kN)		Fatigue load limit	Bearing No.
	$D$	$T$	$C$	$r_{\min.}$	$r_{1\min.}$	$C_r$	$C_{0r}$	(kN) $C_u$	
<b>440</b>	650	157	140	6	3	2 840	4 430	423	<b>46288</b>
	650	196	157	6	3	3 770	6 370	600	<b>46288A</b>
	720	226	201	6	3	4 950	8 110	744	<b>46388</b>
	720	283	226	6	3	6 210	10 100	893	<b>46388A</b>
<b>460</b>	680	163	145	6	3	3 130	5 340	507	<b>46292</b>
	680	204	163	6	3	4 040	6 850	635	<b>46292A</b>
	760	240	214	7.5	4	5 460	9 000	817	<b>46392</b>
	760	300	240	7.5	4	7 130	11 600	1 010	<b>46392A</b>
<b>480</b>	700	165	147	6	3	3 180	5 300	494	<b>46296</b>
	700	206	165	6	3	4 040	7 230	666	<b>46296A</b>
	790	248	221	7.5	4	5 820	8 920	810	<b>46396</b>
	790	310	248	7.5	4	7 530	12 400	1 060	<b>46396A</b>
<b>500</b>	720	167	149	6	3	3 230	5 690	529	<b>462/500</b>
	720	209	167	6	3	4 390	7 850	712	<b>462/500A</b>
	830	264	235	7.5	4	6 570	10 900	955	<b>463/500</b>
	830	330	264	7.5	4	8 510	14 000	1 170	<b>463/500A</b>

[Remark] Bearings not shown above (e.g. inch series) are shown in catalog "large size ball & roller bearings".

# Double-row tapered roller bearings

## TDI type

$d$  100 ~ (220) mm



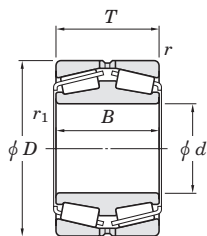
$d$	Boundary dimensions (mm)					Basic load ratings (kN)		Fatigue load limit (kN) $C_u$	Bearing No.
	$D$	$B$	$T$	$r_{\min.}$	$r_{1\min.}$	$C_r$	$C_{0r}$		
<b>100</b>	165	52	52	2	2.5	298	384	55.9	<b>45320</b>
<b>110</b>	180	56	56	2	2.5	378	505	72.2	<b>45322</b>
<b>120</b>	180	46	46	2	2.5	286	424	59.4	<b>45224</b>
	200	62	62	2	2.5	444	598	83.4	<b>45324</b>
<b>130</b>	200	52	52	2	2.5	376	548	75.6	<b>45226</b>
	210	64	64	2	2.5	476	657	90.3	<b>45326</b>
<b>140</b>	210	53	53	2	2.5	390	564	76.9	<b>45228</b>
	225	68	68	2.5	3	611	807	103	<b>45328</b>
<b>150</b>	225	56	56	2.5	3	445	686	91.6	<b>45230</b>
	250	80	80	2.5	3	684	955	120	<b>45330</b>
<b>160</b>	240	60	60	2.5	3	488	705	93.1	<b>45232</b>
	270	86	86	2.5	3	832	1 100	146	<b>45332</b>
<b>170</b>	260	67	67	2.5	3	654	956	124	<b>45234</b>
	280	88	88	2.5	3	834	1 210	145	<b>45334</b>
<b>180</b>	280	74	74	2.5	3	722	1 050	125	<b>45236</b>
	300	96	96	3	4	992	1 370	162	<b>45336</b>
<b>190</b>	290	75	75	2.5	3	751	1 130	133	<b>45238</b>
	320	104	104	3	4	1 130	1 590	183	<b>45338</b>
<b>200</b>	310	82	82	2.5	3	913	1 410	166	<b>45240</b>
	340	112	112	3	4	1 250	1 840	208	<b>45340</b>
<b>220</b>	340	90	90	3	4	933	1 460	167	<b>45244</b>

[Remark] Bearings not shown above (e.g. inch series) are shown in catalog "large size ball & roller bearings".

# Double-row tapered roller bearings

## TDI type

$d$  (220) ~ (420) mm



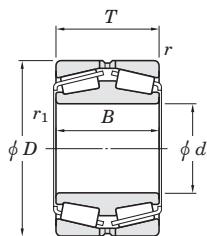
$d$	Boundary dimensions (mm)					Basic load ratings (kN)		Fatigue load limit (kN) $C_u$	Bearing No.
	$D$	$B$	$T$	$r_{\min.}$	$r_{1\min.}$	$C_r$	$C_{0r}$		
<b>220</b>	370	120	120	4	5	1 400	2 060	226	<b>45344</b>
<b>230</b>	350	90	90	3	4	991	1 560	177	<b>45246</b>
<b>240</b>	360	92	92	3	4	1 150	1 790	200	<b>45248</b>
	400	128	128	4	5	1 650	2 470	265	<b>45348</b>
<b>260</b>	400	104	104	4	5	1 320	2 120	227	<b>45252</b>
	440	144	144	4	5	2 180	3 440	357	<b>45352</b>
<b>280</b>	420	106	106	4	5	1 490	2 470	265	<b>45256</b>
	460	146	146	5	6	2 310	3 320	351	<b>45356</b>
<b>300</b>	460	118	118	4	5	1 870	3 150	325	<b>45260</b>
	500	160	160	5	6	2 670	4 240	431	<b>45360</b>
<b>320</b>	480	121	121	4	5	1 830	3 180	322	<b>45264</b>
	540	176	176	5	6	3 380	5 280	528	<b>45364R</b>
<b>340</b>	520	133	133	5	6	2 380	3 850	372	<b>45268</b>
	580	190	190	5	6	3 790	5 470	537	<b>45368</b>
<b>360</b>	540	134	134	5	6	2 370	3 910	393	<b>45272</b>
	600	192	192	5	6	4 230	6 750	648	<b>45372</b>
<b>380</b>	560	135	135	5	6	2 300	3 790	371	<b>45276</b>
	620	194	194	5	6	3 860	6 360	606	<b>45376</b>
<b>400</b>	600	148	148	5	6	3 020	4 960	478	<b>45280</b>
	650	200	200	6	6	4 840	7 810	735	<b>45380</b>
<b>420</b>	620	150	150	5	6	3 010	5 200	496	<b>45284</b>

[Remark] Bearings not shown above (e.g. inch series) are shown in catalog "large size ball & roller bearings".

# Double-row tapered roller bearings

## TDI type

$d$  (420) ~ 500 mm



$d$	Boundary dimensions (mm)					Basic load ratings (kN)		Fatigue load limit (kN) $C_u$	Bearing No.
	$D$	$B$	$T$	$r_{\text{min.}}$	$r_{1 \text{ min.}}$	$C_r$	$C_{0r}$		
<b>420</b>	700	224	224	6	6	5 430	8 380	777	<b>45384</b>
<b>440</b>	650	157	157	6	6	3 190	5 500	512	<b>45288</b> <b>45388</b>
	720	226	226	6	6	5 750	9 130	834	
<b>460</b>	680	163	163	6	6	3 480	5 660	531	<b>45292</b> <b>45392</b>
	760	240	240	7.5	7.5	6 570	10 400	927	
<b>480</b>	700	165	165	6	6	3 830	6 710	614	<b>45296</b>
<b>500</b>	720	167	167	6	6	4 300	7 350	681	<b>452/500</b> <b>453/500</b>
	830	264	264	7.5	7.5	7 970	12 300	1 110	

[Remark] Bearings not shown above (e.g. inch series) are shown in catalog "large size ball & roller bearings".